

FOXL1 Antibody

Catalog No: #31198

Package Size: #31198-1 50ul #31198-2 100ul

Orders: order@signalwayantibody.com

Support: tech@signalwayantibody.com

Description

Product Name	FOXL1 Antibody
Host Species	Rabbit
Clonality	Polyclonal
Applications	ELISA WB
Species Reactivity	Hu Ms
Specificity	The antibody detects endogenous level of total FOXL1 protein.
Immunogen Type	Peptide
Immunogen Description	Synthetic peptide corresponding to a region derived from 2-15 amino acids of Human forkhead box L1
Target Name	FOXL1
Other Names	forkhead box L1, FKH6, FKHL11, FREAC7
Accession No.	Swiss-Prot:Q12952Gene ID:2300;
Uniprot	Q12952
GeneID	2300;
Formulation	Rabbit IgG in pH7.4 PBS, 0.05% NaN ₃ , 40% Glycerol.
Storage	Store at -20°C/1 year

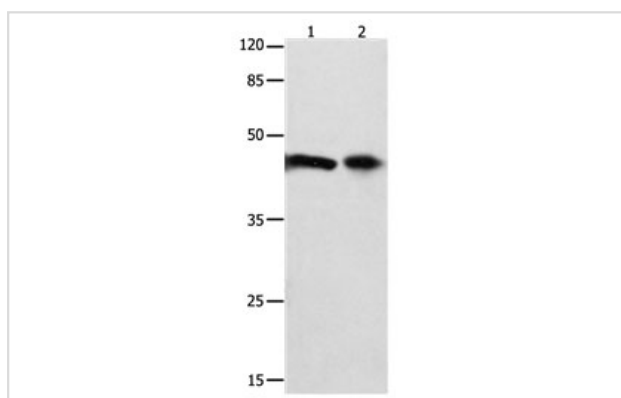
Application Details

Predicted MW: 36kd

ELISA: 1:1000-1:5000

Western blotting: 1:500-1:2000

Images



Gel: 10%SDS-PAGE
 Lane1: 293T cell lysate
 Lane2: Mouse intestine tenue tissue lysate
 Lysate: 40ug
 Primary antibody: 1/850 dilution
 Secondary antibody: Goat anti Rabbit IgG - H&L (HRP) at 1/10000 dilution
 Exposure time: 30 seconds

Background

This gene encodes a member of the forkhead/winged helix-box (FOX) family of transcription factors. FOX transcription factors are characterized by a distinct DNA-binding forkhead domain and play critical roles in the regulation of multiple processes including metabolism, cell proliferation and gene

expression during ontogenesis. Transcription factor required for proper proliferation and differentiation in the gastrointestinal epithelium. Target gene of the hedgehog (Hh) signaling pathway via GLI2 AND GLI3 transcription factors.

Note: This product is for in vitro research use only