

## CCKBR Antibody

Catalog No: #31201

Package Size: #31201-1 50ul #31201-2 100ul

Orders: [order@signalwayantibody.com](mailto:order@signalwayantibody.com)Support: [tech@signalwayantibody.com](mailto:tech@signalwayantibody.com)

## Description

Product Name	CCKBR Antibody
Host Species	Rabbit
Clonality	Polyclonal
Applications	ELISA WB IHC
Species Reactivity	Hu
Specificity	The antibody detects endogenous level of total CCKBR protein.
Immunogen Type	Peptide-KLH
Immunogen Description	Synthetic peptide corresponding to a region derived from 39-53 amino acids of Human cholecystokinin B receptor
Target Name	CCKBR
Other Names	cholecystokinin B receptor, GASR, CCK-B, CCK2R
Accession No.	Swiss-Prot:P32239Gene ID:887;
Uniprot	P32239
GeneID	887;
Concentration	0.9mg/ml
Formulation	Rabbit IgG in pH7.4 PBS, 0.05% NaN <sub>3</sub> , 40% Glycerol.
Storage	Store at -20°C/1 year

## Application Details

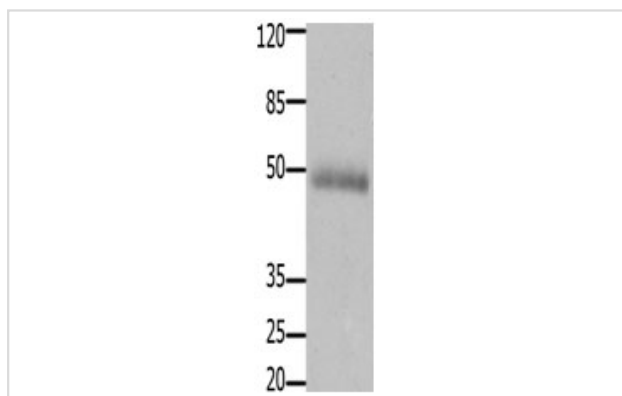
Predicted MW: 49kd

ELISA: 1:1000-1:5000

Western blotting: 1:2000-1:5000

Immunohistochemistry: 1:50-1:150

## Images



Gel: 10%SDS-PAGE

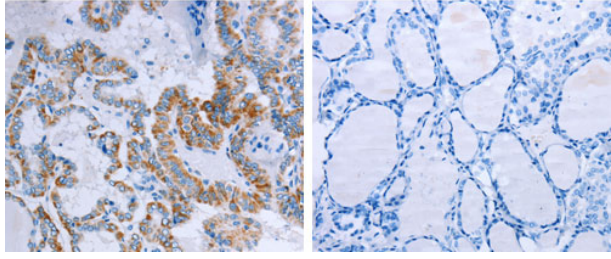
Lysate: 40 µg Human gastric cancer tissue lysate

Primary antibody: 1/1600 dilution

Secondary antibody: Goat anti Rabbit IgG - H&amp;L (HRP) at

1/10000 dilution

Exposure time: 10 seconds



The image on the left is immunohistochemistry of paraffin-embedded Human thyroid cancer tissue using 31201 (CCKBR Antibody) at dilution 1/75, on the right is treated with the synthetic peptide.

## Background

This gene encodes a G-protein coupled receptor for gastrin and cholecystinin (CCK), regulatory peptides of the brain and gastrointestinal tract. This protein is a type B gastrin receptor, which has a high affinity for both sulfated and nonsulfated CCK analogs and is found principally in the central nervous system and the gastrointestinal tract. A misspliced transcript variant including an intron has been observed in cells from colorectal and pancreatic tumors.

Note: This product is for in vitro research use only