

GFRA3 Antibody

Catalog No: #31207

Package Size: #31207-1 50ul #31207-2 100ul

Orders: order@signalwayantibody.com

Support: tech@signalwayantibody.com

Description

Product Name	GFRA3 Antibody
Host Species	Rabbit
Clonality	Polyclonal
Applications	ELISA WB
Species Reactivity	Hu
Specificity	The antibody detects endogenous level of total GFRA3 protein.
Immunogen Type	Peptide
Immunogen Description	Synthetic peptide corresponding to a region derived from 346-359 amino acids of Human GDNF family receptor alpha 3
Target Name	GFRA3
Other Names	GDNF family receptor alpha 3
Accession No.	Swiss-Prot:O60609Gene ID:2676;
Uniprot	O60609
GeneID	2676;
Formulation	Rabbit IgG in pH7.4 PBS, 0.05% NaN ₃ , 40% Glycerol.
Storage	Store at -20°C/1 year

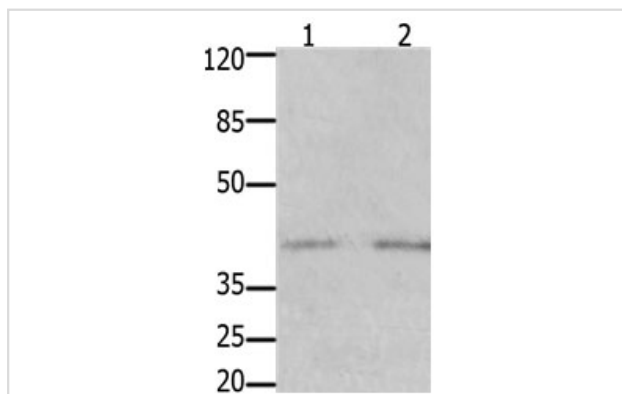
Application Details

Predicted MW: 44kd

ELISA: 1:1000-1:5000

Western blotting: 1:1000-1:2000

Images



Gel: 10%SDS-PAGE

Lane1: Human fetal kidney tissue lysate

Lane2: Human fetal brain tissue lysate

Lysates: 40 ug per lane

Primary antibody: 1/1000 dilution

Secondary antibody: Goat anti Rabbit IgG - H&L (HRP) at 1/10000 dilution

Exposure time: 5 minutes

Background

GDNF family receptor alpha-3 is a protein that in humans is encoded by the GFRA3 gene. The protein encoded by this gene is a

glycosylphosphatidylinositol(GPI)-linked cell surface receptor and a member of the GDNF receptor family. It forms a signaling receptor complex with RET tyrosine kinase receptor and binds the ligand, artemin. Widely expressed in adult and fetus which exhibit a similar pattern. Essentially not expressed in the central nervous system, but highly expressed in several sensory and sympathetic ganglia of the peripheral nervous system. Moderate expression in many non-neuronal tissues, particularly those of the digestive and urogenital systems, but high expression in stomach and appendix. Several types of glandular tissues show low expression.

Note: This product is for in vitro research use only