

GPR3 Antibody

Catalog No: #31211

Package Size: #31211-1 50ul #31211-2 100ul

Orders: order@signalwayantibody.comSupport: tech@signalwayantibody.com

Description

Product Name	GPR3 Antibody
Host Species	Rabbit
Clonality	Polyclonal
Applications	ELISA WB IHC
Species Reactivity	Hu Ms Rt
Specificity	The antibody detects endogenous level of total GPR3 protein.
Immunogen Type	Peptide-KLH
Immunogen Description	Synthetic peptide corresponding to a region derived from 318-330 amino acids of Human G protein-coupled receptor 3
Target Name	GPR3
Other Names	G protein-coupled receptor 3, ACCA
Formulation	Rabbit IgG in pH7.4 PBS, 0.05% NaN ₃ , 40% Glycerol.
Storage	Store at -20°C/1 year

Application Details

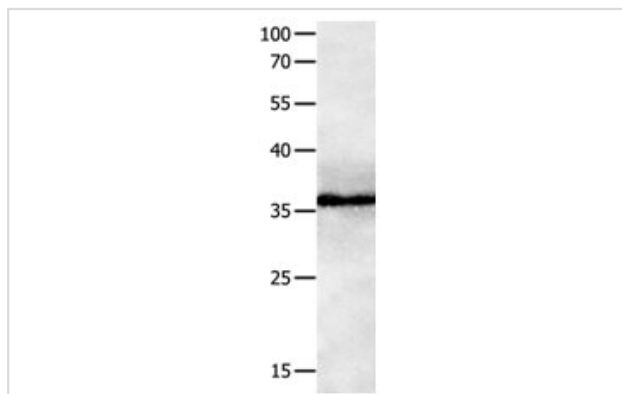
Predicted MW: 35kd

ELISA: 1:1000-1:5000

Western blotting: 1:500-1:2000

Immunohistochemistry: 1:50-1:200

Images



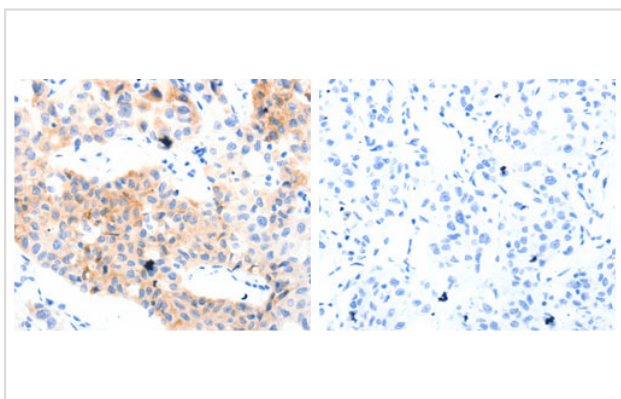
Gel: 10%SDS-PAGE

Lysate: 40 µg Human brain malignant glioma tissue lysate

Primary antibody: 1/1100 dilution

Secondary antibody: Goat anti Rabbit IgG - H&L (HRP) at 1/10000 dilution

Exposure time: 2 minutes



The image on the left is immunohistochemistry of paraffin-embedded Human lung cancer tissue using 31211 (GPR3 Antibody) at dilution 1/55, on the right is treated with the synthetic peptide.

Background

This gene is a member of the G protein-coupled receptor family and is found in the cell membrane. G protein-coupled receptors, characterized by a seven transmembrane domain motif, are involved in translating outside signals into G protein mediated intracellular effects. The encoded protein activates adenylate cyclase and modulates amyloid-beta production in a mouse model, suggesting that it may play a role in Alzheimer's disease.

Note: This product is for in vitro research use only