

## HDAC1 Antibody

Catalog No: #31215

Package Size: #31215-1 50ul #31215-2 100ul

Orders: order@signalwayantibody.com

Support: tech@signalwayantibody.com

## Description

Product Name	HDAC1 Antibody
Host Species	Rabbit
Clonality	Polyclonal
Applications	ELISA WB IHC
Species Reactivity	Hu Ms
Specificity	The antibody detects endogenous level of total HDAC1 protein.
Immunogen Type	Peptide
Immunogen Description	Synthetic peptide corresponding to a region derived from 469-482 amino acids of Human histone deacetylase 1
Target Name	HDAC1
Other Names	histone deacetylase 1, HD1, RPD3, GON-10, RPD3L1
Accession No.	Swiss-Prot:Q13547Gene ID:3065;
Uniprot	Q13547
GeneID	3065;
Formulation	Rabbit IgG in pH7.4 PBS, 0.05% NaN <sub>3</sub> , 40% Glycerol.
Storage	Store at -20°C/1 year

## Application Details

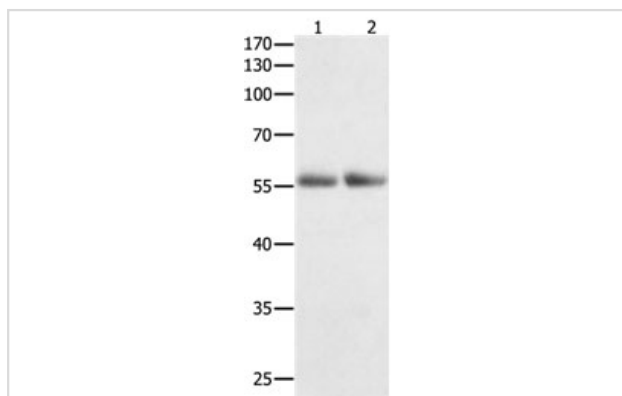
Predicted MW: 55kd

ELISA: 1:1000-1:5000

Western blotting: 1:200-1:1000

Immunohistochemistry: 1:25-1:100

## Images



Gel: 10%SDS-PAGE

Lane1: Human colon tissue lysate

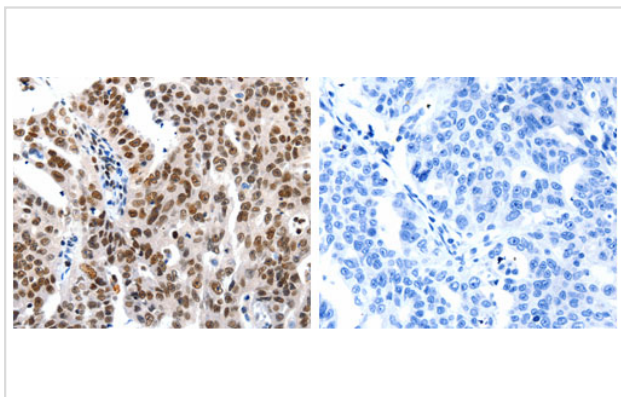
Lane2: Human kidney cancer tissue lysate

Lysates: 40 ug per lane

Primary antibody: 1/400 dilution

Secondary antibody: Goat anti Rabbit IgG - H&amp;L (HRP) at 1/10000 dilution

Exposure time: 2 minutes



The image on the left is immunohistochemistry of paraffin-embedded Human ovarian cancer tissue using 31215 (HDAC1 Antibody) at dilution 1/20, on the right is treated with the synthetic peptide.

## Background

Histone acetylation and deacetylation, catalyzed by multisubunit complexes, play a key role in the regulation of eukaryotic gene expression. The protein encoded by this gene belongs to the histone deacetylase/acuc/alpha family and is a component of the histone deacetylase complex. It also interacts with retinoblastoma tumor-suppressor protein and this complex is a key element in the control of cell proliferation and differentiation. Together with metastasis-associated protein-2, it deacetylates p53 and modulates its effect on cell growth and apoptosis.

Note: This product is for in vitro research use only