

## HMGA2 Antibody

Catalog No: #31218

Package Size: #31218-1 50ul #31218-2 100ul

Orders: order@signalwayantibody.com

Support: tech@signalwayantibody.com

## Description

Product Name	HMGA2 Antibody
Host Species	Rabbit
Clonality	Polyclonal
Applications	ELISA WB
Species Reactivity	Hu
Specificity	The antibody detects endogenous level of total HMGA2 protein.
Immunogen Type	Peptide-KLH
Immunogen Description	Synthetic peptide corresponding to a region derived from 59-72 amino acids of Human high mobility group AT-hook 2
Target Name	HMGA2
Other Names	high mobility group AT-hook 2, BABL, LIPO, HMGIC, HMGI-C, STQTL9
Formulation	Rabbit IgG in pH7.4 PBS, 0.05% NaN <sub>3</sub> , 40% Glycerol.
Storage	Store at -20°C/1 year

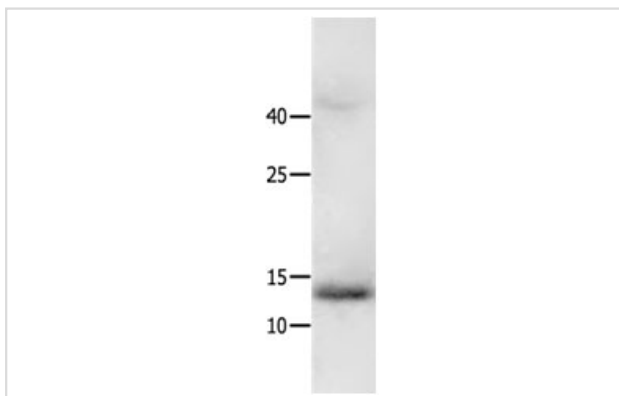
## Application Details

Predicted MW: 12kd

ELISA: 1:1000-1:5000

Western blotting: 1:500-1:2000

## Images



Gel: 15%+12% SDS-PAGE

Lysate: 40 µg Human colon cancer tissue lysate

Primary antibody: 1/550 dilution

Secondary antibody: Goat anti Rabbit IgG - H&amp;L (HRP) at

1/10000 dilution

Exposure time: 10 minutes

## Background

This gene encodes a protein that belongs to the non-histone chromosomal high mobility group (HMG) protein family. HMG proteins function as architectural factors and are essential components of the enhancesome. This protein contains structural DNA-binding domains and may act as a transcriptional regulating factor. Identification of the deletion, amplification, and rearrangement of this gene that are associated with myxoid liposarcoma suggests a role in adipogenesis and mesenchymal differentiation. A gene knock out study of the mouse counterpart demonstrated that

this gene is involved in diet-induced obesity. Alternate transcriptional splice variants, encoding different isoforms, have been characterized.

---

Note: This product is for in vitro research use only