

## ASK1(Ab-966) Antibody

Catalog No: #21134

Package Size: #21134-1 50ul #21134-2 100ul

Orders: order@signalwayantibody.com

Support: tech@signalwayantibody.com

## Description

Product Name	ASK1(Ab-966) Antibody
Host Species	Rabbit
Clonality	Polyclonal
Purification	Antibodies were produced by immunizing rabbits with synthetic peptide and KLH conjugates. Antibodies were purified by affinity-chromatography using epitope-specific peptide.
Applications	WB IHC IF
Species Reactivity	Hu Ms Rt
Specificity	The antibody detects endogenous level of total ASK1 protein.
Immunogen Type	Peptide-KLH
Immunogen Description	Peptide sequence around aa.964~968 (S-I-S-L-P) derived from Human ASK1.
Target Name	ASK1
Other Names	ASK-1; M3K5; MAP3K5; MAPK/ERK kinase kinase 5; MAPKKK5
Accession No.	Swiss-Prot: Q99683NCBI Protein: NP_005914.1
Uniprot	Q99683
GeneID	4217;
Concentration	1.0mg/ml
Formulation	Supplied at 1.0mg/mL in phosphate buffered saline (without Mg <sup>2+</sup> and Ca <sup>2+</sup> ), pH 7.4, 150mM NaCl, 0.02% sodium azide and 50% glycerol.
Storage	Store at -20°C for long term preservation (recommended). Store at 4°C for short term use.

## Application Details

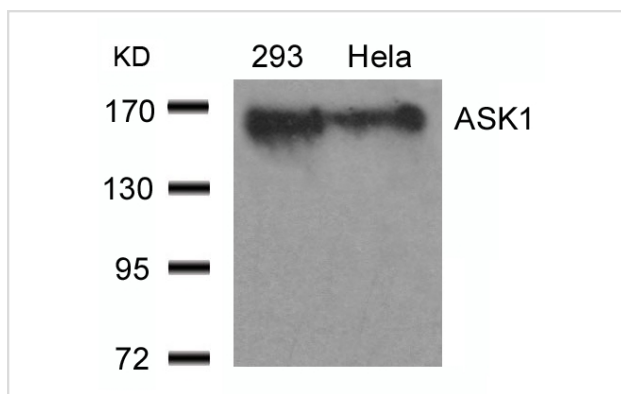
Predicted MW: 155kd

Western blotting: 1:500~1:1000

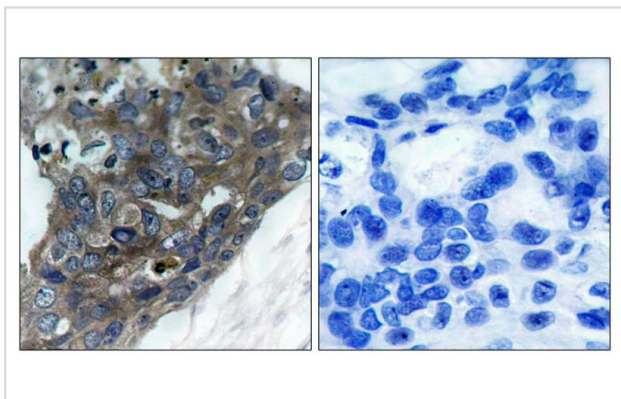
Immunohistochemistry: 1:50~1:100

Immunofluorescence: 1:100~1:200

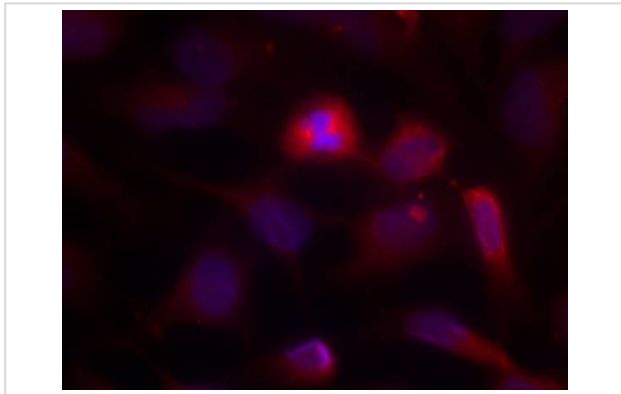
## Images



Western blot analysis of extracts from 293 and HeLa cells using ASK1(Ab-966) Antibody #21134.



Immunohistochemical analysis of paraffin-embedded human breast carcinoma tissue using ASK1(Ab-966) Antibody #21134(left) or the same antibody preincubated with blocking peptide(right).



Immunofluorescence staining of methanol-fixed HeLa cells using ASK1(Ab-966) Antibody #21134.

## Background

Component of a protein kinase signal transduction cascade. Phosphorylates and activates MAP2K4 and MAP2K6, which in turn activate the JNK and p38 MAP kinases, respectively. Overexpression induces apoptotic cell death.

Zhang W, et al. (2005) J Biol Chem. 280(19): 19036-19044.

Fujii K, et al. (2004) Oncogene. 23(29):5099-5104.

Goldman EH, et al. (2004) J Biol Chem 2004 Mar 12; 279(11): 10442-10449.

Zhang L, et al. (1999) Proc Natl Acad Sci U S A. 96(15): 8511-8515.

Note: This product is for in vitro research use only