

HMGB2 Antibody

Catalog No: #31219

Package Size: #31219-1 50ul #31219-2 100ul

Orders: order@signalwayantibody.com

Support: tech@signalwayantibody.com

Description

Product Name	HMGB2 Antibody
Host Species	Rabbit
Clonality	Polyclonal
Applications	ELISA WB
Species Reactivity	Hu Ms
Specificity	The antibody detects endogenous level of total HMGB2 protein.
Immunogen Type	Peptide-KLH
Immunogen Description	Synthetic peptide corresponding to a region derived from 166-180 amino acids of Human high mobility group box 2
Target Name	HMGB2
Other Names	high mobility group box 2, HMG2
Accession No.	Swiss-Prot:P26583Gene ID:3148;
Uniprot	P26583
GeneID	3148;
Formulation	Rabbit IgG in pH7.4 PBS, 0.05% NaN ₃ , 40% Glycerol.
Storage	Store at -20°C/1 year

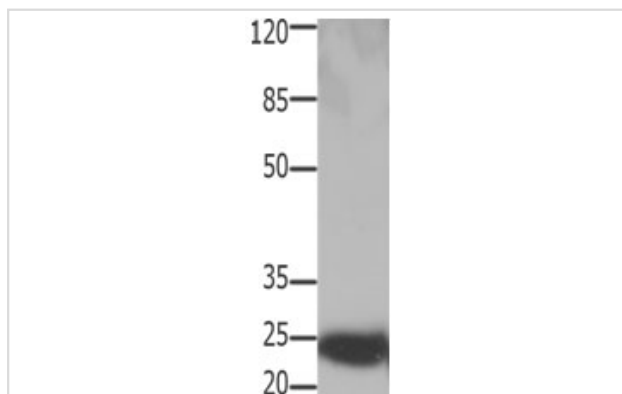
Application Details

Predicted MW: 24kd

ELISA: 1:1000-1:10000

Western blotting: 1:2000-1:5000

Images



Gel: 10%SDS-PAGE

Lysate: 30 µg RAW264.7 cell lysate

Primary antibody: 1/300 dilution

Secondary antibody: Goat anti Rabbit IgG - H&L (HRP) at 1/10000 dilution

Exposure time: 50 seconds

Background

This gene encodes a member of the non-histone chromosomal high mobility group protein family. The proteins of this family are chromatin-associated

and ubiquitously distributed in the nucleus of higher eukaryotic cells. In vitro studies have demonstrated that this protein is able to efficiently bend DNA and form DNA circles. These studies suggest a role in facilitating cooperative interactions between cis-acting proteins by promoting DNA flexibility. This protein was also reported to be involved in the final ligation step in DNA end-joining processes of DNA double-strand breaks repair and V(D)J recombination.

Note: This product is for in vitro research use only