

HMGB3 Antibody

Catalog No: #31220

Package Size: #31220-1 50ul #31220-2 100ul

Orders: order@signalwayantibody.com

Support: tech@signalwayantibody.com

Description

Product Name	HMGB3 Antibody
Host Species	Rabbit
Clonality	Polyclonal
Applications	ELISA WB IHC
Species Reactivity	Hu Ms
Specificity	The antibody detects endogenous level of total HMGB3 protein.
Immunogen Type	Peptide
Immunogen Description	Synthetic peptide corresponding to a region derived from 164-178 amino acids of Human high mobility group box 3
Target Name	HMGB3
Other Names	high mobility group box 3, HMG4, HMG-4, HMG2A, HMG-2a
Accession No.	Swiss-Prot:O15347Gene ID:3149;
Uniprot	O15347
GeneID	3149;
Formulation	Rabbit IgG in pH7.4 PBS, 0.05% NaN ₃ , 40% Glycerol.
Storage	Store at -20°C/1 year

Application Details

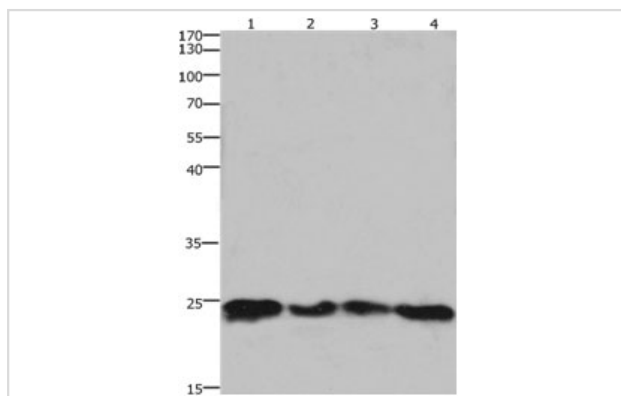
Predicted MW: 23kd

ELISA: 1:1000-1:10000

Western blotting: 1:2000-1:5000

Immunohistochemistry: 1:20-1:100

Images



Gel: 10%SDS-PAGE

Lane1: 293T cell lysate

Lane2: HeLa cell lysate

Lane3: Mouse lung tissue lysate

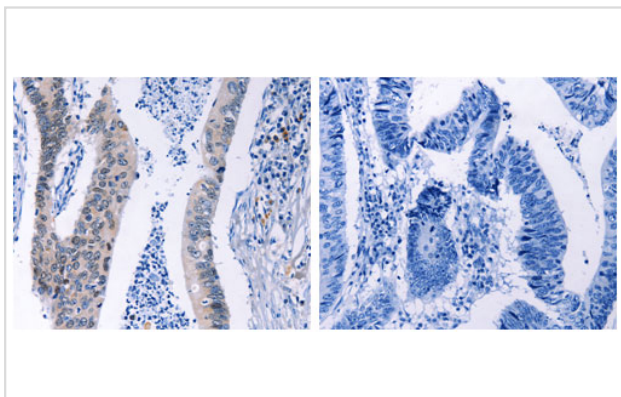
Lane4: Mouse brain tissue lysate

Lysates: 30ug per lane

Primary antibody: 1/400 dilution

Secondary antibody: Goat anti Rabbit IgG - H&L (HRP) at 1/10000 dilution

Exposure time: 1.5 minutes



The image on the left is immunohistochemistry of paraffin-embedded Human colon cancer tissue using 31220 (HMGB3 Antibody) at dilution 1/20, on the right is treated with the synthetic peptide.

Background

High-mobility group protein B3 is a protein that in humans is encoded by the HMGB3 gene. HMGB3 belongs to the high mobility group (HMG) protein superfamily. Like HMG1 and HMG2, HMGB3 contains DNA-binding HMG box domains and is classified into the HMG box subfamily. Members of the HMG box subfamily are thought to play a fundamental role in DNA replication, nucleosome assembly and transcription.

Note: This product is for in vitro research use only