

KLF5 Antibody

Catalog No: #31225

Package Size: #31225-1 50ul #31225-2 100ul

Orders: order@signalwayantibody.com

Support: tech@signalwayantibody.com

Description

Product Name	KLF5 Antibody
Host Species	Rabbit
Clonality	Polyclonal
Applications	ELISA WB
Species Reactivity	Hu
Specificity	The antibody detects endogenous level of total KLF5 protein.
Immunogen Type	Peptide-KLH
Immunogen Description	Synthetic peptide corresponding to a region derived from 107-120 amino acids of Human Kruppel-like factor 6 (intestinal)
Target Name	KLF5
Other Names	Kruppel-like factor 6 (intestinal), CKLF, IKLF, BTEB3
Accession No.	Swiss-Prot:Q13887Gene ID:688;
Uniprot	Q13887
GeneID	688;
Formulation	Rabbit IgG in pH7.4 PBS, 0.05% NaN ₃ , 40% Glycerol.
Storage	Store at -20°C/1 year

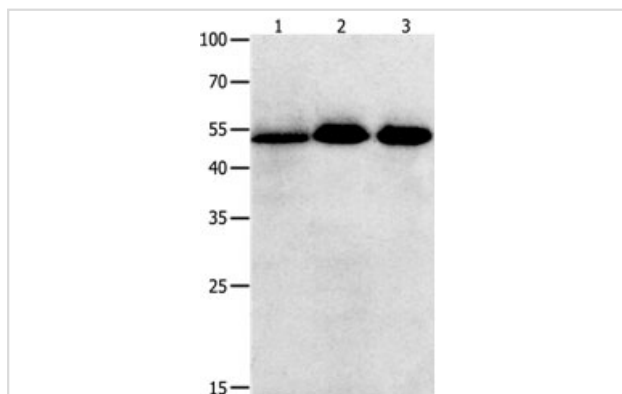
Application Details

Predicted MW: 51kd

ELISA: 1:1000-1:5000

Western blotting: 1:500-1:2000

Images



Gel: 10%+12%+15% SDS-PAGE

Lane1: Human lymphoma tissue lysate

Lane2: Human ovarian cancer tissue lysate

Lane3: Human colon cancer tissue lysate

Lysates: 40 µg per lane

Primary antibody: 1/350 dilution

Secondary antibody: Goat anti Rabbit IgG - H&L (HRP) at

1/10000 dilution

Exposure time: 20 seconds

Background

This gene encodes a member of the Kruppel-like factor subfamily of zinc finger proteins. Since the protein localizes to the nucleus and binds the

epidermal growth factor response element, it is thought to be a transcription factor.

Note: This product is for in vitro research use only