

## LAIR2 Antibody

Catalog No: #31227

Package Size: #31227-1 50ul #31227-2 100ul

Orders: [order@signalwayantibody.com](mailto:order@signalwayantibody.com)Support: [tech@signalwayantibody.com](mailto:tech@signalwayantibody.com)

## Description

Product Name	LAIR2 Antibody
Host Species	Rabbit
Clonality	Polyclonal
Applications	ELISA IHC
Species Reactivity	Hu
Specificity	The antibody detects endogenous level of total LAIR2 protein.
Immunogen Type	Peptide-KLH
Immunogen Description	Synthetic peptide corresponding to a region derived from 140-152 amino acids of Human leukocyte-associated immunoglobulin-like receptor 2
Target Name	LAIR2
Other Names	leukocyte-associated immunoglobulin-like receptor 2, CD306
Accession No.	Swiss-Prot:Q6ISS4Gene ID:3904;
Uniprot	Q6ISS4
GeneID	3904;
Concentration	1.4mg/ml
Formulation	Rabbit IgG in pH7.4 PBS, 0.05% NaN <sub>3</sub> , 40% Glycerol.
Storage	Store at -20°C/1 year

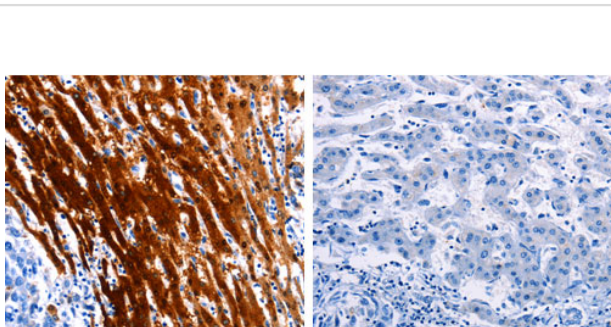
## Application Details

Predicted MW: 16kd

ELISA: 1:1000-1:5000

Immunohistochemistry: 1:25-1:100

## Images



The image on the left is immunohistochemistry of paraffin-embedded Human liver cancer tissue using 31227 (LAIR2 Antibody) at dilution 1/10, on the right is treated with the synthetic peptide.

## Background

---

The protein encoded by this gene is a member of the immunoglobulin superfamily. It was identified by its similarity to LAIR1, an inhibitory receptor present on mononuclear leukocytes. This gene maps to a region of 19q13.4, termed the leukocyte receptor cluster, which contains 29 genes in the immunoglobulin superfamily, including LAIR1. The function of this protein is unknown, although it is thought to be secreted and may help modulate mucosal tolerance. Two transcript variants encoding different isoforms have been found for this gene.

---

Note: This product is for in vitro research use only