

LHB Antibody

Catalog No: #31228

Package Size: #31228-1 50ul #31228-2 100ul

Orders: order@signalwayantibody.com

Support: tech@signalwayantibody.com

Description

Product Name	LHB Antibody
Host Species	Rabbit
Clonality	Polyclonal
Applications	ELISA WB
Species Reactivity	Hu
Specificity	The antibody detects endogenous level of total LHB protein.
Immunogen Type	Peptide
Immunogen Description	Synthetic peptide corresponding to a region derived from 114-128 amino acids of Human luteinizing hormone beta polypeptide
Target Name	LHB
Other Names	Luteinizing hormone beta polypeptide, CGB4, hLHB, LSH-B
Accession No.	Swiss-Prot:P01229Gene ID:3972;
Uniprot	P01229
GeneID	3972;
Concentration	0.7mg/ml
Formulation	Rabbit IgG in pH7.4 PBS, 0.05% NaN ₃ , 40% Glycerol.
Storage	Store at -20°C/1 year

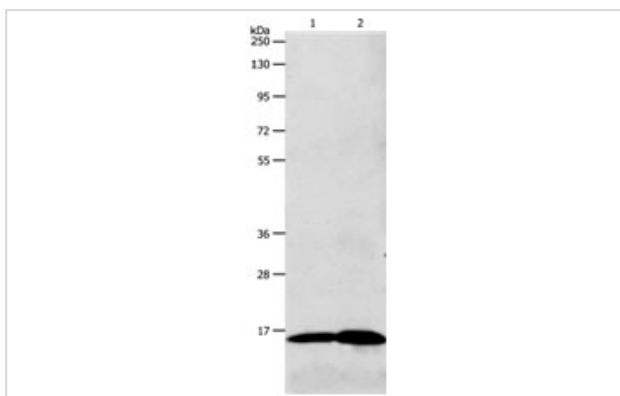
Application Details

Predicted MW: 15kd

ELISA: 1:1000-1:5000

Western blotting: 1:500-1:2000

Images



Gel: 10+12%SDS-PAGE

Lane1: 293T cell lysate

Lane2: Human fetal brain tissue lysate

Lysates: 40 ug per lane

Primary antibody: 1/800 dilution

Secondary antibody: Goat anti Rabbit IgG - H&L (HRP) at 1/10000 dilution

Exposure time: 5 minutes

Background

This gene is a member of the glycoprotein hormone beta chain family and encodes the beta subunit of luteinizing hormone (LH). Glycoprotein hormones are heterodimers consisting of a common alpha subunit and an unique beta subunit which confers biological specificity. LH is expressed in the pituitary gland and promotes spermatogenesis and ovulation by stimulating the testes and ovaries to synthesize steroids. The genes for the beta chains of chorionic gonadotropin and for luteinizing hormone are contiguous on chromosome 19q13.3. Mutations in this gene are associated with hypogonadism which is characterized by infertility and pseudohermaphroditism.?

Note: This product is for in vitro research use only