

## BPIFB2 Antibody

Catalog No: #31230

Package Size: #31230-1 50ul #31230-2 100ul

Orders: order@signalwayantibody.com

Support: tech@signalwayantibody.com

## Description

Product Name	BPIFB2 Antibody
Host Species	Rabbit
Clonality	Polyclonal
Applications	ELISA WB IHC
Species Reactivity	Hu
Specificity	The antibody detects endogenous level of total BPIFB2 protein.
Immunogen Type	Peptide-KLH
Immunogen Description	Synthetic peptide corresponding to a region derived from 37-50 amino acids of human BPI fold containing family B, member 2
Target Name	BPIFB2
Other Names	BPI fold containing family B, member 2, RYSR, BPIL1, LPLUNC2, C20orf184, dJ726C3.2
Accession No.	Swiss-Prot:Q8N4F0Gene ID:80341;
Uniprot	Q8N4F0
GeneID	80341;
Formulation	Rabbit IgG in pH7.4 PBS, 0.05% NaN <sub>3</sub> , 40% Glycerol.
Storage	Store at -20°C/1 year

## Application Details

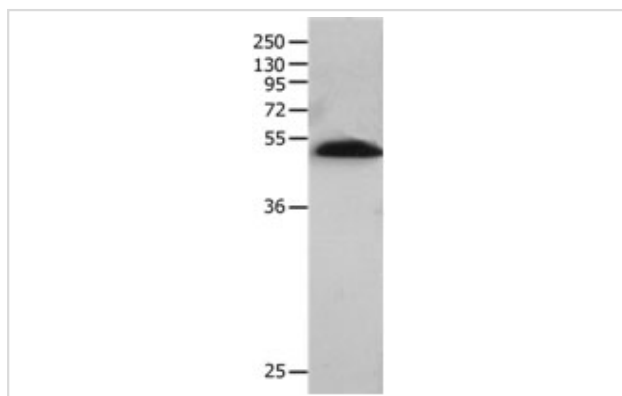
Predicted MW: 49kd

ELISA: 1:2000-1:10000

Western blotting: 1:1000-1:5000

Immunohistochemistry: 1:25-1:100

## Images



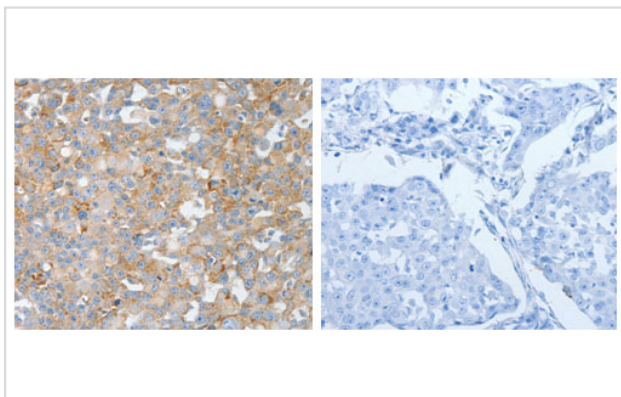
Gel: 10% SDS-PAGE

Lysate: 80µg Human lung tissue lysate

Primary antibody: 1/530 dilution

Secondary antibody: Goat anti Rabbit IgG - H&amp;L (HRP) at 1/5000 dilution

Exposure time: 10 minutes



The image on the left is immunohistochemistry of paraffin-embedded Human breast cancer tissue using 31230 (BPIFB2 Antibody) at dilution 1/50, on the right is treated with the synthetic peptide.

## Background

This gene encodes a member of the lipid transfer/lipoplysaccharide binding protein (LT/LBP) gene family. It is highly expressed in hypertrophic tonsils. This gene and three other members of the LT/LBP gene family form a cluster on the long arm of chromosome 20.

Note: This product is for in vitro research use only