

SLC16A1 Antibody

Catalog No: #31233

Package Size: #31233-1 50ul #31233-2 100ul

Orders: order@signalwayantibody.com

Support: tech@signalwayantibody.com

Description

Product Name	SLC16A1 Antibody
Host Species	Rabbit
Clonality	Polyclonal
Applications	ELISA WB IHC
Species Reactivity	Hu
Specificity	The antibody detects endogenous level of total SLC16A1 protein.
Immunogen Type	Peptide-KLH
Immunogen Description	Synthetic peptide corresponding to a region derived from 484-500 amino acids of Human solute carrier family 16, member 1 (monocarboxylic acid transporter 1)
Target Name	SLC16A1
Other Names	Solute carrier family 16, member 1 (monocarboxylic acid transporter 1), MCT, HHF7, MCT1
Accession No.	Swiss-Prot:P53985Gene ID:6566;
Uniprot	P53985
GeneID	6566;
Formulation	Rabbit IgG in pH7.4 PBS, 0.05% NaN ₃ , 40% Glycerol.
Storage	Store at -20°C/1 year

Application Details

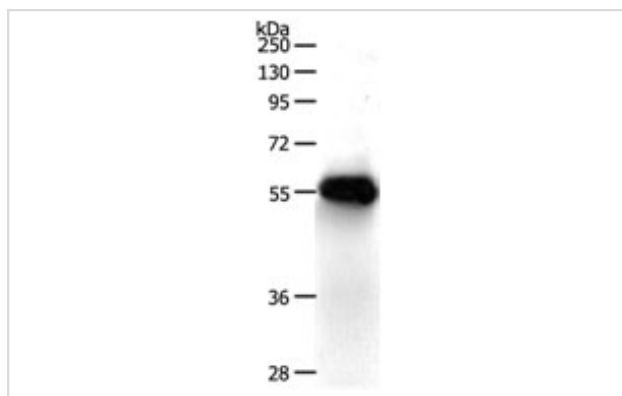
Predicted MW: 54kd

ELISA: 1:2000-1:10000

Western blotting: 1:1000-1:5000

Immunohistochemistry: 1:50-1:200

Images



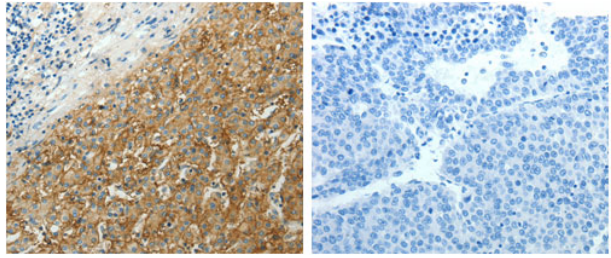
Gel: 10%SDS-PAGE

Lysate: 40 µg Human seminoma tissue lysate

Primary antibody: 1/750 dilution

Secondary antibody: Goat anti Rabbit IgG - H&L (HRP) at 1/10000 dilution

Exposure time: 30 seconds



The image on the left is immunohistochemistry of paraffin-embedded human liver cancer tissue using 31233 (SLC16A1 Antibody) at dilution 1/50, on the right is treated with the synthetic peptide.

Background

The protein encoded by this gene is a proton-linked monocarboxylate transporter that catalyzes the movement of many monocarboxylates, such as lactate and pyruvate, across the plasma membrane. Mutations in this gene are associated with erythrocyte lactate transporter defect. Alternatively spliced transcript variants have been found for this gene.

Note: This product is for in vitro research use only