

## CSF1R Antibody

Catalog No: #31235

Package Size: #31235-1 50ul #31235-2 100ul

Orders: order@signalwayantibody.com

Support: tech@signalwayantibody.com

## Description

|                       |  |
|-----------------------|--|
| Product Name          | CSF1R Antibody   |
| Host Species          | Rabbit   |
| Clonality             | Polyclonal   |
| Applications          | ELISA WB   |
| Species Reactivity    | Hu   |
| Specificity           | The antibody detects endogenous level of total CSF1R protein.  |
| Immunogen Type        | Peptide-KLH  |
| Immunogen Description | Synthetic peptide corresponding to a region derived from 955-972 amino acids of Human colony stimulating factor 1 receptor |
| Target Name           | CSF1R  |
| Other Names           | Colony stimulating factor 1 receptor, FMS, CSFR, FIM2, HDLS, C-FMS, CD115, CSF-1R, M-CSF-R                                 |
| Accession No.         | Swiss-Prot:P07333Gene ID:1436;   |
| Uniprot               | P07333   |
| GeneID                | 1436;  |
| Formulation           | Rabbit IgG in pH7.4 PBS, 0.05% NaN <sub>3</sub> , 40% Glycerol.  |
| Storage               | Store at -20°C/1 year  |

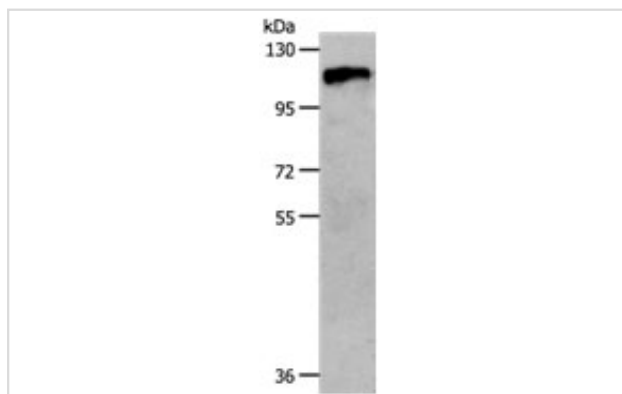
## Application Details

Predicted MW: 108kd

ELISA: 1:1000-1:5000

Western blotting: 1:500-1:2000

## Images



Gel: 8%SDS-PAGE

Lysate: 40 µg 231 cell lysate

Primary antibody: 1/800 dilution

Secondary antibody: Goat anti Rabbit IgG - H&amp;L (HRP) at 1/10000 dilution

Exposure time: 2 seconds

## Background

The protein encoded by this gene is the receptor for colony stimulating factor 1, a cytokine which controls the production, differentiation, and function

of macrophages. This receptor mediates most if not all of the biological effects of this cytokine. Ligand binding activates the receptor kinase through a process of oligomerization and transphosphorylation. The encoded protein is a tyrosine kinase transmembrane receptor and member of the CSF1/PDGF receptor family of tyrosine-protein kinases. Mutations in this gene have been associated with a predisposition to myeloid malignancy. The first intron of this gene contains a transcriptionally inactive ribosomal protein L7 processed pseudogene oriented in the opposite direction.

---

Note: This product is for in vitro research use only