

PIF1 Antibody

Catalog No: #31236

Package Size: #31236-1 50ul #31236-2 100ul

Orders: order@signalwayantibody.com

Support: tech@signalwayantibody.com

Description

| | |
|-----------------------|--|
| Product Name | PIF1 Antibody |
| Host Species | Rabbit |
| Clonality | Polyclonal |
| Applications | ELISA WB |
| Species Reactivity | Hu |
| Specificity | The antibody detects endogenous level of total PIF1 protein. |
| Immunogen Type | Peptide |
| Immunogen Description | Synthetic peptide corresponding to a region derived from 9-28 amino acids of Human ATP-dependent DNA helicase PIF1 |
| Target Name | PIF1 |
| Other Names | ATP-dependent DNA helicase PIF1, PIF, C15orf20 |
| Accession No. | Swiss-Prot:Q9H611Gene ID:80119; |
| Uniprot | Q9H611 |
| GeneID | 80119; |
| Concentration | 1.0mg/ml |
| Formulation | Rabbit IgG in pH7.4 PBS, 0.05% NaN ₃ , 40% Glycerol. |
| Storage | Store at -20°C/1 year |

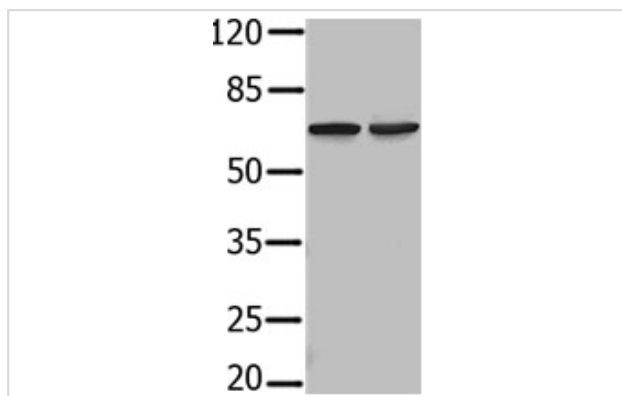
Application Details

Predicted MW: 70kd

ELISA: 1:1000-1:5000

Western blotting: 1:500-1:2000

Images



Gel: 8%SDS-PAGE

Lane1: 293T cell lysate

Lane2: Hela cell lysate

Lysates: 40 ug per lane

Primary antibody: 1/500 dilution

Secondary antibody: Donkey anti Rabbit IgG - H&L (HRP) at

1/5000 dilution

Exposure time: 1 minute

Background

PIF1 is a 5-prime-to-3-prime DNA helicase that negatively regulates telomerase (see TERT; MIM 187270), a reverse transcriptase that maintains telomere length. Tightly cell cycle regulated and expressed in late S/G2 phase.

Note: This product is for in vitro research use only