

## MMP8 Antibody

Catalog No: #31238

Package Size: #31238-1 50ul #31238-2 100ul

Orders: order@signalwayantibody.com

Support: tech@signalwayantibody.com

## Description

Product Name	MMP8 Antibody
Host Species	Rabbit
Clonality	Polyclonal
Applications	ELISA WB IHC
Species Reactivity	Hu
Specificity	The antibody detects endogenous level of total MMP8 protein.
Immunogen Type	Peptide-KLH
Immunogen Description	Synthetic peptide corresponding to a region derived from 122-135 amino acids of human matrix metalloproteinase 8 (neutrophil collagenase)
Target Name	MMP8
Other Names	matrix metalloproteinase 8 (neutrophil collagenase), HNC, CLG1, MMP-8, PMNL-CL
Accession No.	Swiss-Prot:P22894Gene ID:4317;
Uniprot	P22894
GeneID	4317;
Formulation	Rabbit IgG in pH7.4 PBS, 0.05% NaN <sub>3</sub> , 40% Glycerol.
Storage	Store at -20°C/1 year

## Application Details

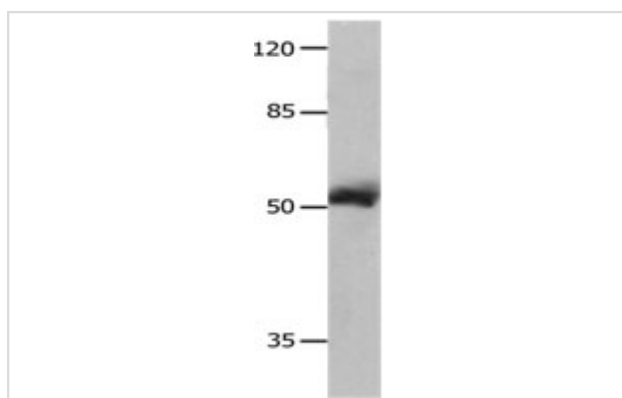
Predicted MW: 53kd

ELISA: 1:2000-1:5000

Western blotting: 1:500-1:2000

Immunohistochemistry: 1:25-1:100

## Images



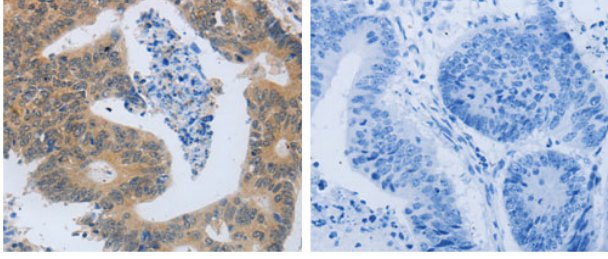
Gel: 8% SDS-PAGE

Lysate: 40µg 231 cell lysate

Primary antibody: 1/800 dilution

Secondary antibody: Goat anti Rabbit IgG - H&amp;L (HRP) at 1/5000 dilution

Exposure time: 10 seconds



The image on the left is immunohistochemistry of paraffin-embedded Human colon cancer tissue using 31238 (MMP8 Antibody) at dilution 1/45, on the right is treated with the synthetic peptide.

## Background

Proteins of the matrix metalloproteinase (MMP) family are involved in the breakdown of extracellular matrix in normal physiological processes, such as embryonic development, reproduction, and tissue remodeling, as well as in disease processes, such as arthritis and metastasis. Most MMP's are secreted as inactive proproteins which are activated when cleaved by extracellular proteinases. However, the enzyme encoded by this gene is stored in secondary granules within neutrophils and is activated by autolytic cleavage. Its function is degradation of type I, II and III collagens. The gene is part of a cluster of MMP genes which localize to chromosome 11q22.3.

Note: This product is for in vitro research use only