

MMP10 Antibody

Catalog No: #31239

Package Size: #31239-1 50ul #31239-2 100ul

Orders: order@signalwayantibody.com

Support: tech@signalwayantibody.com

Description

Product Name	MMP10 Antibody
Host Species	Rabbit
Clonality	Polyclonal
Applications	ELISA WB IHC
Species Reactivity	Hu Ms
Specificity	The antibody detects endogenous level of total MMP10 protein.
Immunogen Type	Peptide-KLH
Immunogen Description	Synthetic peptide corresponding to a region derived from 404-418 amino acids of human matrix metalloproteinase 10 (stromelysin 2)
Target Name	MMP10
Other Names	matrix metalloproteinase 10 (stromelysin 2), SL-2, STMY2
Accession No.	Swiss-Prot:P09238Gene ID:4319;
Uniprot	P09238
GeneID	4319;
Formulation	Rabbit IgG in pH7.4 PBS, 0.05% NaN ₃ , 40% Glycerol.
Storage	Store at -20°C/1 year

Application Details

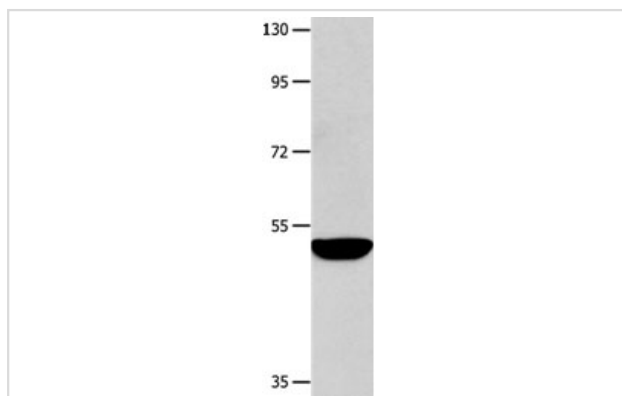
Predicted MW: 54kd

ELISA: 1:1000-1:5000

Western blotting: 1:500-1:2000

Immunohistochemistry: 1:15-1:50

Images



Gel: 8%SDS-PAGE

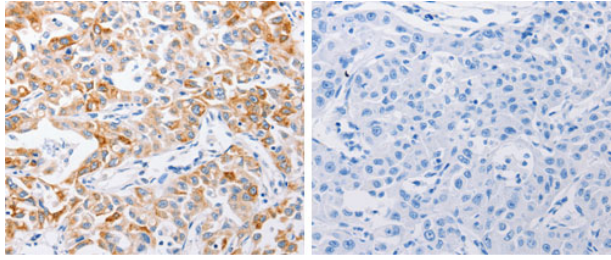
Lysate: 40 µg NIH/3T3 cell lysate

Primary antibody: 1/200 dilution

Secondary antibody: Goat anti Rabbit IgG - H&L (HRP) at

1/10000 dilution

Exposure time: 1 minute



The image on the left is immunohistochemistry of paraffin-embedded Human lung cancer tissue using 31239 (MMP10 Antibody) at dilution 1/15, on the right is treated with the synthetic peptide.

Background

Proteins of the matrix metalloproteinase (MMP) family are involved in the breakdown of extracellular matrix in normal physiological processes, such as embryonic development, reproduction, and tissue remodeling, as well as in disease processes, such as arthritis and metastasis. Most MMP's are secreted as inactive proproteins which are activated when cleaved by extracellular proteinases. The enzyme encoded by this gene degrades proteoglycans and fibronectin. The gene is part of a cluster of MMP genes which localize to chromosome 11q22.3.

Note: This product is for in vitro research use only