

MMP19 Antibody

Catalog No: #31241

Package Size: #31241-1 50ul #31241-2 100ul

Orders: order@signalwayantibody.com

Support: tech@signalwayantibody.com

Description

Product Name	MMP19 Antibody
Host Species	Rabbit
Clonality	Polyclonal
Applications	ELISA WB
Species Reactivity	Hu
Specificity	The antibody detects endogenous level of total MMP19 protein.
Immunogen Type	Peptide-KLH
Immunogen Description	Synthetic peptide peptide corresponding to a region derived from 404-418 amino acids of human matrix metalloproteinase 19
Target Name	MMP19
Other Names	matrix metalloproteinase 19, MMP18, RASI-1
Accession No.	Swiss-Prot:Q99542Gene ID:4327;
Uniprot	Q99542
GeneID	4327;
Formulation	Rabbit IgG in pH7.4 PBS, 0.05% NaN ₃ , 40% Glycerol.
Storage	Store at -20°C/1 year

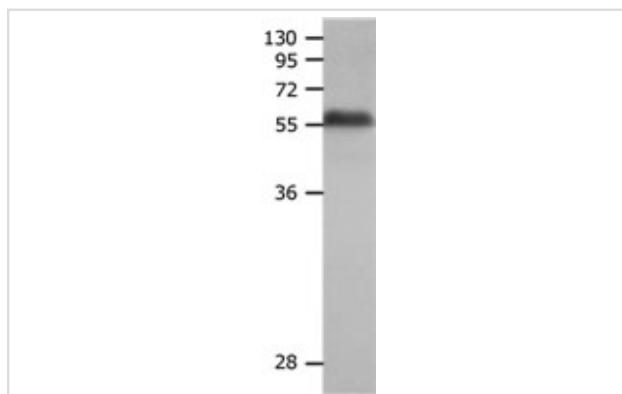
Application Details

Predicted MW: 57kd

ELISA: 1:2000-1:5000

Western blotting: 1:500-1:2000

Images



Gel: 10% SDS-PAGE

Lysate: 40µg Human fetal liver tissue lysate

Primary antibody: 1/500 dilution

Secondary antibody: Goat anti Rabbit IgG - H&L (HRP) at 1/5000 dilution

Exposure time: 10 minutes

Background

Proteins of the matrix metalloproteinase (MMP) family are involved in the breakdown of extracellular matrix in normal physiological processes, such as

embryonic development, reproduction, and tissue remodeling, as well as in disease processes, such as arthritis and metastasis. Most MMP's are secreted as inactive proproteins which are activated when cleaved by extracellular proteinases. This protein is expressed in human epidermis and it has a role in cellular proliferation as well as migration and adhesion to type I collagen. Multiple transcript variants encoding distinct isoforms have been identified for this gene.

Note: This product is for in vitro research use only