

POMC Antibody

Catalog No: #31243

Package Size: #31243-1 50ul #31243-2 100ul

Orders: order@signalwayantibody.com

Support: tech@signalwayantibody.com

Description

Product Name	POMC Antibody
Host Species	Rabbit
Clonality	Polyclonal
Applications	ELISA WB
Species Reactivity	Hu Ms Rt
Specificity	The antibody detects endogenous level of total POMC protein.
Immunogen Type	Peptide-KLH
Immunogen Description	Synthetic peptide peptide corresponding to a region derived from 136-150 amino acids of human proopiomelanocortin
Target Name	POMC
Other Names	proopiomelanocortin, LPH, MSH, NPP, POC, ACTH, CLIP
Accession No.	Swiss-Prot:P01189Gene ID:5443;
Uniprot	P01189
GeneID	5443;
Formulation	Rabbit IgG in pH7.4 PBS, 0.05% NaN ₃ , 40% Glycerol.
Storage	Store at -20°C/1 year

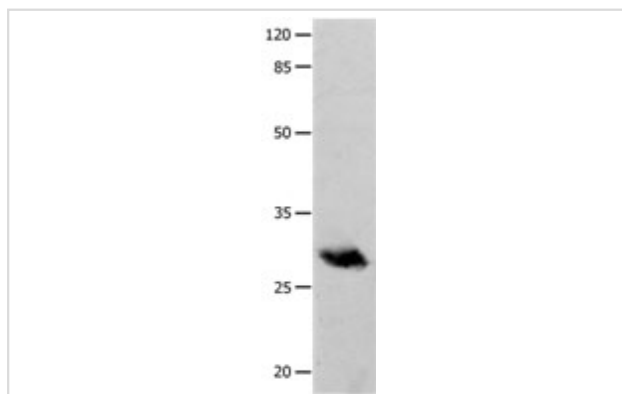
Application Details

Predicted MW: 29kd

ELISA: 1:2000-1:5000

Western blotting: 1:500-1:2000

Images



Gel: 10% SDS-PAGE

Lysate: 40µg Human fetal brain tissue lysate

Primary antibody: 1/400 dilution

Secondary antibody: Goat anti Rabbit IgG - H&L (HRP) at 1/5000 dilution

Exposure time: 10 seconds

Background

This gene encodes a polypeptide hormone precursor that undergoes extensive, tissue-specific, post-translational processing via cleavage by

subtilisin-like enzymes known as prohormone convertases. There are eight potential cleavage sites within the polypeptide precursor and, depending on tissue type and the available convertases, processing may yield as many as ten biologically active peptides involved in diverse cellular functions. The encoded protein is synthesized mainly in corticotroph cells of the anterior pituitary where four cleavage sites are used; adrenocorticotrophin, essential for normal steroidogenesis and the maintenance of normal adrenal weight, and lipotropin beta are the major end products. In other tissues, including the hypothalamus, placenta, and epithelium, all cleavage sites may be used, giving rise to peptides with roles in pain and energy homeostasis, melanocyte stimulation, and immune modulation.

Note: This product is for in vitro research use only