

MYL9 Antibody

Catalog No: #31244

Package Size: #31244-1 50ul #31244-2 100ul

Orders: order@signalwayantibody.com

Support: tech@signalwayantibody.com

Description

Product Name	MYL9 Antibody
Host Species	Rabbit
Clonality	Polyclonal
Applications	ELISA WB IHC
Species Reactivity	Hu Ms Rt
Specificity	The antibody detects endogenous level of total MYL9 protein.
Immunogen Type	Peptide
Immunogen Description	Synthetic peptide corresponding to a region derived from 2-14 amino acids of Human myosin, light chain 9, regulatory
Target Name	MYL9
Other Names	myosin, light chain 9, regulatory, LC20, MLC2, MRLC1, MYRL2, MLC-2C
Accession No.	Swiss-Prot:P24844Gene ID:10398;
Uniprot	P24844
GeneID	10398;
Formulation	Rabbit IgG in pH7.4 PBS, 0.05% NaN ₃ , 40% Glycerol.
Storage	Store at -20°C/1 year

Application Details

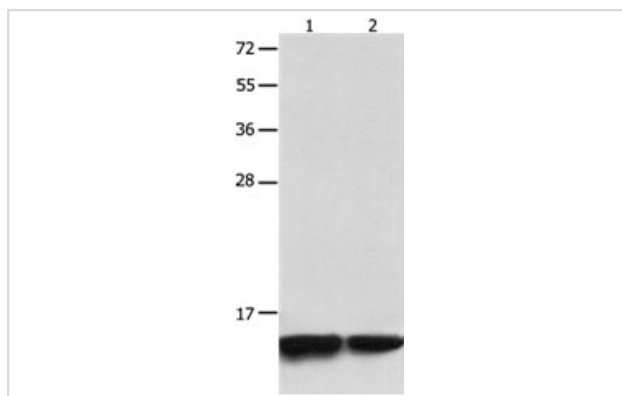
Predicted MW: 14kd

ELISA: 1:2000-1:10000

Western blotting: 1:1000-1:5000

Immunohistochemistry: 1:50-1:200

Images



Gel: 12%SDS-PAGE

Lane1: Jurkat cell lysate

Lane2: 231 cell lysate

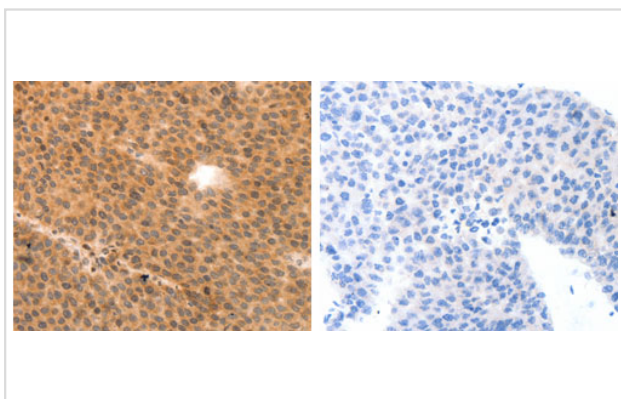
Lysates: 40 ug per lane

Primary antibody: 1/1500 dilution

Secondary antibody: Goat anti Rabbit IgG - H&L (HRP) at

1/10000 dilution

Exposure time: 30 seconds



The image on the left is immunohistochemistry of paraffin-embedded Human liver cancer tissue using 31244(MYL9 Antibody) at dilution 1/80, on the right is treated with the synthetic peptide.

Background

Myosin, a structural component of muscle, consists of two heavy chains and four light chains. The protein encoded by this gene is a myosin light chain that may regulate muscle contraction by modulating the ATPase activity of myosin heads. The encoded protein binds calcium and is activated by myosin light chain kinase. Two transcript variants encoding different isoforms have been found for this gene.

Note: This product is for in vitro research use only