

## NFASC Antibody

Catalog No: #31250

Package Size: #31250-1 50ul #31250-2 100ul

Orders: order@signalwayantibody.com

Support: tech@signalwayantibody.com

## Description

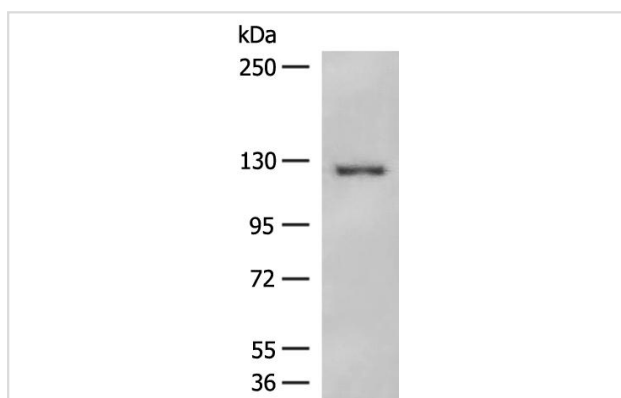
Product Name	NFASC Antibody
Host Species	Rabbit
Clonality	Polyclonal
Applications	WB
Species Reactivity	Hu Ms Rt
Specificity	The antibody detects endogenous level of total NFASC protein.
Immunogen Type	Peptide-KLH
Immunogen Description	Synthetic peptide corresponding to a region derived from 1225-1240 amino acids of human neurofascin
Target Name	NFASC
Other Names	neurofascin, NF, NRCAML
Accession No.	Swiss-Prot:O94856Gene ID:23114;
Uniprot	O94856
GeneID	23114;
Concentration	0.6mg/ml
Formulation	Rabbit IgG in pH7.4 PBS, 0.05% NaN <sub>3</sub> , 40% Glycerol.
Storage	Store at -20°C/1 year

## Application Details

Predicted MW: 150kd

Western blotting: 1:200-1:1000

## Images



Gel: 6%SDS-PAGE Lysate: 40  $\mu$ g Lane: Human lung tissue lysate  
 Primary antibody: 31250(NFASC Antibody) at dilution 1/200  
 Secondary antibody: Goat anti rabbit IgG at 1/8000  
 dilution Exposure time: 2 minutes

## Background

This gene encodes an L1 family immunoglobulin cell adhesion molecule with multiple IGCAM and fibronectin domains. The protein functions in neurite outgrowth, neurite fasciculation, and organization of the axon initial segment (AIS) and nodes of Ranvier on axons during early development. Both the

AIS and nodes of Ranvier contain high densities of voltage-gated Na<sup>+</sup> (Nav) channels which are clustered by interactions with cytoskeletal and scaffolding proteins including this protein, gliomedin, ankyrin 3 (ankyrin-G), and betaIV spectrin. This protein links the AIS extracellular matrix to the intracellular cytoskeleton. This gene undergoes extensive alternative splicing, and the full-length nature of some variants has not been determined.

---

Note: This product is for in vitro research use only