

## NTSR1 Antibody

Catalog No: #31251

Package Size: #31251-1 50ul #31251-2 100ul

Orders: order@signalwayantibody.com

Support: tech@signalwayantibody.com

## Description

Product Name	NTSR1 Antibody
Host Species	Rabbit
Clonality	Polyclonal
Applications	ELISA WB
Species Reactivity	Hu
Specificity	The antibody detects endogenous level of total NTSR1 protein.
Immunogen Type	Peptide
Immunogen Description	Synthetic peptide of human NTSR1
Target Name	NTSR1
Other Names	neurotensin receptor 1 (high affinity), NTR
Accession No.	Swiss-Prot:P30989Gene ID:4923;
Uniprot	P30989
GeneID	4923;
Concentration	1.2 mg/ml
Formulation	Rabbit IgG in pH7.4 PBS, 0.05% NaN <sub>3</sub> , 40% Glycerol.
Storage	Store at -20°C/1 year

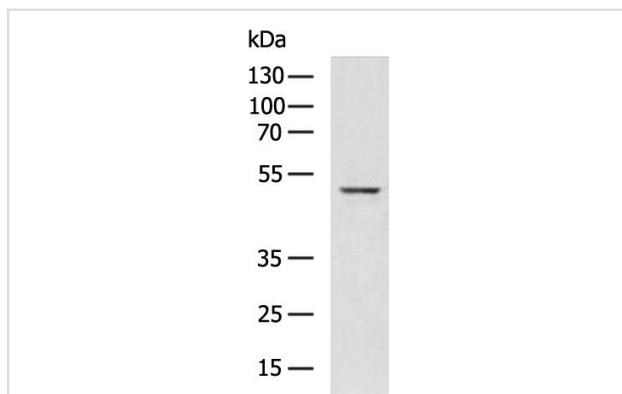
## Application Details

Predicted MW: 46kd

ELISA: 1:2000-1:10000

Western blotting: 1:1000-1:5000

## Images



Gel: 8%SDS-PAGE

Lysate: 40 ug

Lane: HT29 cell lysate

Primary antibody: at  
dilution 1/1400

Secondary antibody: (HRP-conjugated

Goat anti rabbit IgG) at 1/5000 dilution

Exposure time: 20 seconds

## Background

Neurotensin receptor 1 belongs to the large superfamily of G-protein coupled receptors. NTSR1 mediates the multiple functions of neurotensin, such

as hypotension, hyperglycemia, hypothermia, antinociception, and regulation of intestinal motility and secretion.?

---

Note: This product is for in vitro research use only