

HCRTR2 Antibody

Catalog No: #31252

Package Size: #31252-1 50ul #31252-2 100ul

Orders: order@signalwayantibody.com

Support: tech@signalwayantibody.com

Description

Product Name	HCRTR2 Antibody
Host Species	Rabbit
Clonality	Polyclonal
Applications	ELISA WB
Species Reactivity	Hu Ms
Specificity	The antibody detects endogenous level of total HCRTR2 protein.
Immunogen Type	Peptide
Immunogen Description	Synthetic peptide peptide corresponding to a region derived from 405-419 amino acids of human hypocretin (orexin) receptor 2
Target Name	HCRTR2
Other Names	hypocretin (orexin) receptor 2, OX2R
Accession No.	Swiss-Prot:O43614Gene ID:3062;
Uniprot	O43614
GeneID	3062;
Concentration	0.4mg/ml
Formulation	Rabbit IgG in pH7.4 PBS, 0.05% NaN ₃ , 40% Glycerol.
Storage	Store at -20°C/1 year

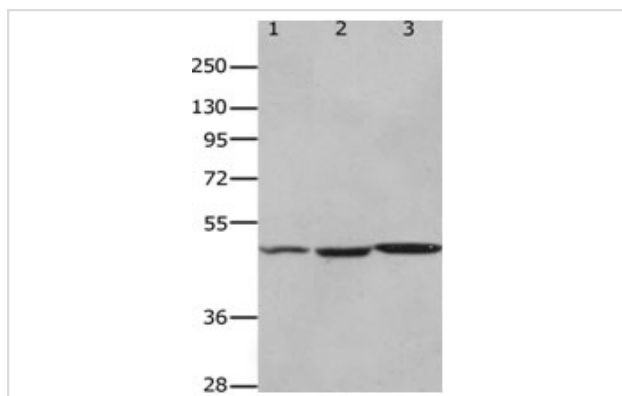
Application Details

Predicted MW: 51kd

ELISA: 1:2000-1:10000

Western blotting: 1:1000-1:5000

Images



Gel: 10% SDS-PAGE

Lane1: Mouse kidney tissue lysate

Lane2: Mouse brain tissue lysate

Lane3: Mouse heart tissue lysate

Lysates: 40ug per lane

Primary antibody: 1/1100 dilution

Secondary antibody: Goat anti Rabbit IgG - H&L (HRP) at 1/5000 dilution

Exposure time: 90 seconds

Background

The protein encoded by this gene is a G-protein coupled receptor involved in the regulation of feeding behavior. The encoded protein binds the hypothalamic neuropeptides orexin A and orexin B. A related gene (HCRTR1) encodes a G-protein coupled receptor that selectively binds orexin A.

Note: This product is for in vitro research use only