

## LPAR4 Antibody

Catalog No: #31253

Package Size: #31253-1 50ul #31253-2 100ul

Orders: order@signalwayantibody.com

Support: tech@signalwayantibody.com

## Description

Product Name	LPAR4 Antibody
Host Species	Rabbit
Clonality	Polyclonal
Applications	ELISA WB IHC
Species Reactivity	Hu Ms Rt
Specificity	The antibody detects endogenous level of total LPAR4 protein.
Immunogen Type	Peptide
Immunogen Description	Synthetic peptide corresponding to a region derived from 358-370 amino acids of Human lysophosphatidic acid receptor 4
Target Name	LPAR4
Other Names	lysophosphatidic acid receptor 4, LPA4, P2Y9, GPR23, P2RY9, P2Y5-LIKE
Accession No.	Swiss-Prot:Q99677Gene ID:2846;
Uniprot	Q99677
GeneID	2846;
Concentration	1.2mg/ml
Formulation	Rabbit IgG in pH7.4 PBS, 0.05% NaN <sub>3</sub> , 40% Glycerol.
Storage	Store at -20°C/1 year

## Application Details

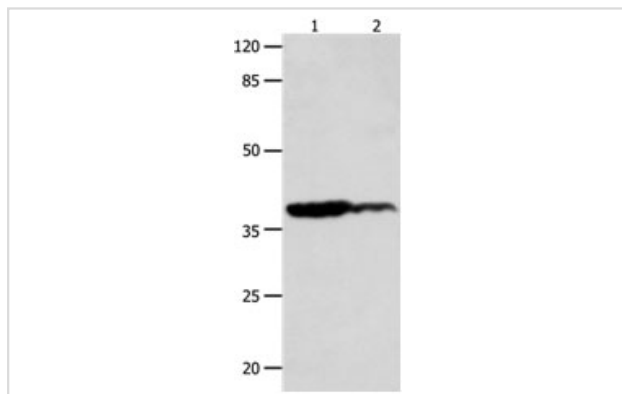
Predicted MW: 42kd

ELISA: 1:1000-1:5000

Western blotting: 1:500-1:2000

Immunohistochemistry: 1:25-1:100

## Images



Gel: 10%SDS-PAGE

Lane1: Human leiomyosarcoma tissue lysate

Lane2: Human liver cancer tissue lysate

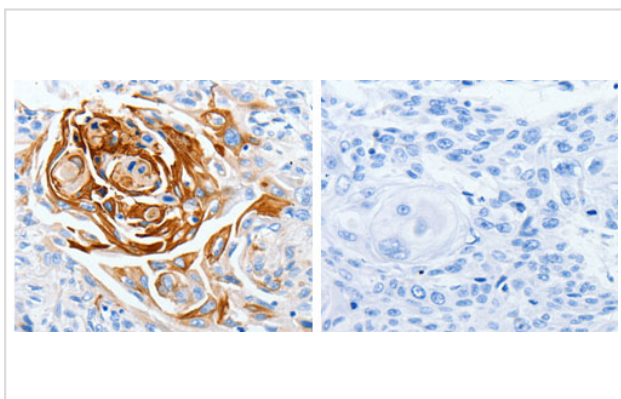
Lysates: 40 ug per lane

Primary antibody: 1/450 dilution

Secondary antibody: Goat anti Rabbit IgG - H&amp;L (HRP) at

1/10000 dilution

Exposure time: 30 seconds



The image on the left is immunohistochemistry of paraffin-embedded Human esophagus cancer tissue using 31253 (LPAR4 Antibody) at dilution 1/30, on the right is treated with the synthetic peptide.

## Background

This gene encodes a member of the lysophosphatidic acid receptor family. It may also be related to the P2Y receptors, a family of receptors that bind purine and pyrimidine nucleotides and are coupled to G proteins. The encoded protein may play a role in monocytic differentiation.

Note: This product is for in vitro research use only