

PECAM1 Antibody

Catalog No: #31257

Package Size: #31257-1 50ul #31257-2 100ul

Orders: order@signalwayantibody.com

Support: tech@signalwayantibody.com

Description

Product Name	PECAM1 Antibody
Host Species	Rabbit
Clonality	Polyclonal
Applications	ELISA WB IHC
Species Reactivity	Hu
Specificity	The antibody detects endogenous level of total PECAM1 protein.
Immunogen Type	Peptide-KLH
Immunogen Description	Synthetic peptide corresponding to a region derived from 725-735 amino acids of Human platelet/endothelial cell adhesion molecule 1
Target Name	PECAM1
Other Names	Platelet/endothelial cell adhesion molecule 1, CD31, PECA1, GPIIA', PECAM-1, endoCAM, CD31/EndoCAM
Accession No.	Swiss-Prot:P16284Gene ID:5175;
Uniprot	P16284
GeneID	5175;
Formulation	Rabbit IgG in pH7.4 PBS, 0.05% NaN ₃ , 40% Glycerol.
Storage	Store at -20°C/1 year

Application Details

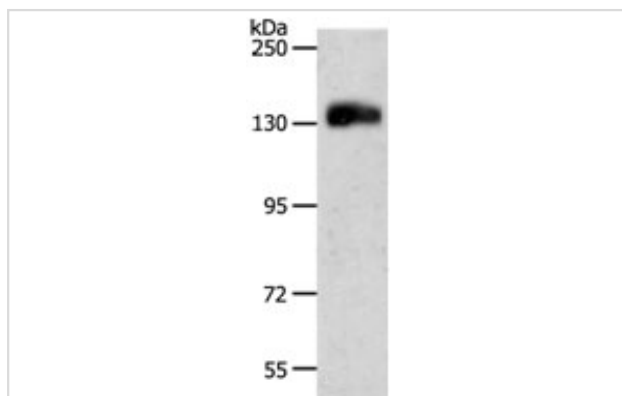
Predicted MW: 83kd

ELISA: 1:1000-1:5000

Western blotting: 1:500-1:2000

Immunohistochemistry: 1:25-1:100

Images



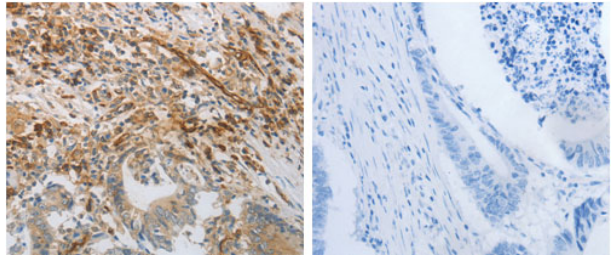
Gel: 8%SDS-PAGE

Lysate: 60 µg Jurkat cell lysate

Primary antibody: 1/500 dilution

Secondary antibody: Goat anti Rabbit IgG - H&L (HRP) at 1/10000 dilution

Exposure time: 5 minutes



The image on the left is immunohistochemistry of paraffin-embedded human colon cancer tissue using 31257 (PECAM1 Antibody) at dilution 1/30, on the right is treated with the synthetic peptide.

Background

The protein encoded by this gene is found on the surface of platelets, monocytes, neutrophils, and some types of T-cells, and makes up a large portion of endothelial cell intercellular junctions. The encoded protein is a member of the immunoglobulin superfamily and is likely involved in leukocyte migration, angiogenesis, and integrin activation.

Note: This product is for in vitro research use only