

PIBF1 Antibody

Catalog No: #31261

Package Size: #31261-1 50ul #31261-2 100ul

Orders: order@signalwayantibody.comSupport: tech@signalwayantibody.com

Description

Product Name	PIBF1 Antibody
Host Species	Rabbit
Clonality	Polyclonal
Applications	ELISA WB IHC
Species Reactivity	Hu
Specificity	The antibody detects endogenous level of total PIBF1 protein.
Immunogen Type	Peptide
Immunogen Description	Synthetic peptide peptide corresponding to a region derived from 745-757 amino acids of human progesterone immunomodulatory binding factor 1
Target Name	PIBF1
Other Names	progesterone immunomodulatory binding factor 1, PIBF, CEP90, C13orf24, RP11-505F3.1
Accession No.	Swiss-Prot:Q8WXW3Gene ID:10464;
Uniprot	Q8WXW3
GeneID	10464;
Formulation	Rabbit IgG in pH7.4 PBS, 0.05% NaN ₃ , 40% Glycerol.
Storage	Store at -20°C/1 year

Application Details

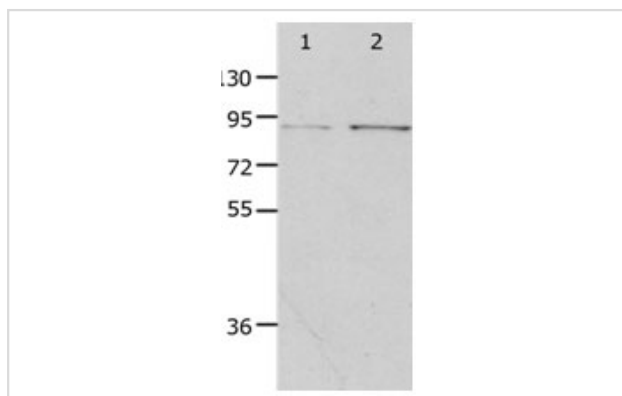
Predicted MW: 90kd

ELISA: 1:1000-1:2000

Western blotting: 1:200-1:1000

Immunohistochemistry: 1:25-1:100

Images



Gel: 10% SDS-PAGE

Lane1: Hela cell lysate

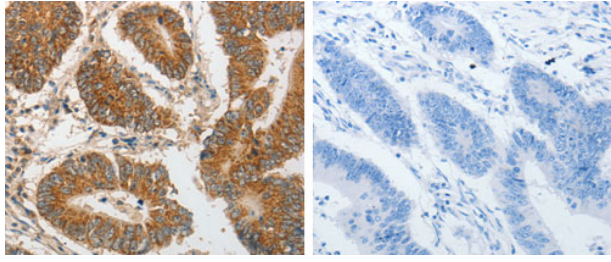
Lane2: 293T cell lysate

Lysates: 40ug per lane

Primary antibody: 1/400 dilution

Secondary antibody: Goat anti Rabbit IgG - H&L (HRP) at 1/5000 dilution

Exposure time: 2 minutes



The image on the left is immunohistochemistry of paraffin-embedded Human colon cancer tissue using 31261 (PIBF1 Antibody) at dilution 1/20, on the right is treated with the synthetic peptide.

Background

Progesterone-induced-blocking factor 1 is a protein that in humans is encoded by the PIBF1 gene. It has been shown to localize to the centrosome and has also been named CEP90. Mediator of progesterone that by acting on the phospholipase A2 enzyme interferes with arachidonic acid metabolism, induces a Th2 biased immune response, and by controlling NK activity exerts an anti-abortive effect.

Note: This product is for in vitro research use only