

SOX1 Antibody

Catalog No: #31269

Package Size: #31269-1 50ul #31269-2 100ul

Orders: order@signalwayantibody.com

Support: tech@signalwayantibody.com

Description

Product Name	SOX1 Antibody
Host Species	Rabbit
Clonality	Polyclonal
Applications	ELISA WB
Species Reactivity	Hu Ms
Specificity	The antibody detects endogenous level of total SOX1 protein.
Immunogen Type	Peptide-KLH
Immunogen Description	Synthetic peptide corresponding to a region derived from 378-391 amino acids of human SRY (sex determining region Y)-box 1
Target Name	SOX1
Other Names	SRY (sex determining region Y)-box 1
Accession No.	Swiss-Prot:O00570Gene ID:6656;
Uniprot	O00570
GeneID	6656;
Formulation	Rabbit IgG in pH7.4 PBS, 0.05% NaN ₃ , 40% Glycerol.
Storage	Store at -20°C/1 year

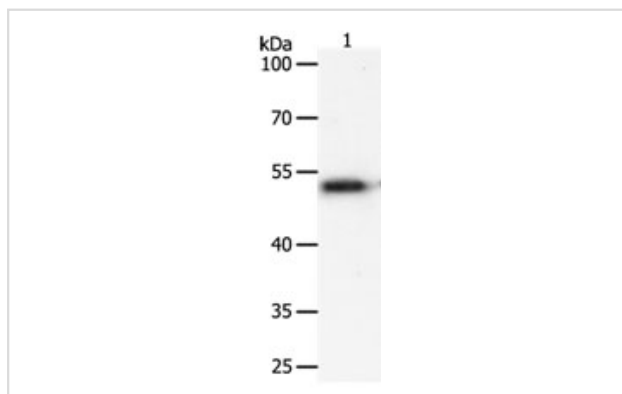
Application Details

Predicted MW: 39kd

ELISA: 1:1000-1:5000

Western blotting: 1:200-1:1000

Images



Gel: 10%SDS-PAGE

Lane1: Human liver cancer tissue lysate

Lysates: 40 µg per lane

Primary antibody: 1/400 dilution

Secondary antibody: Goat anti Rabbit IgG - H&L (HRP) at 1/10000 dilution

Exposure time: 20 seconds

Background

This intronless gene encodes a member of the SOX (SRY-related HMG-box) family of transcription factors involved in the regulation of embryonic

development and in the determination of the cell fate. The encoded protein may act as a transcriptional activator after forming a protein complex with other proteins. In mice, a similar protein regulates the gamma-crystallin genes and is essential for lens development.?

Note: This product is for in vitro research use only