

SPAG4 Antibody

Catalog No: #31271

Package Size: #31271-1 50ul #31271-2 100ul

Orders: order@signalwayantibody.com

Support: tech@signalwayantibody.com

Description

Product Name	SPAG4 Antibody
Host Species	Rabbit
Clonality	Polyclonal
Applications	ELISA WB IHC
Species Reactivity	Hu Ms
Specificity	The antibody detects endogenous level of total SPAG4 protein.
Immunogen Type	Peptide
Immunogen Description	Synthetic peptide corresponding to a region derived from 422-436 amino acids of Human sperm associated antigen 4
Target Name	SPAG4
Other Names	Sperm associated antigen 4, SUN4, CT127
Accession No.	Swiss-Prot:Q9NPE6Gene ID:6676;
Uniprot	Q9NPE6
GeneID	6676;
Concentration	0.8 mg/ml
Formulation	Rabbit IgG in pH7.4 PBS, 0.05% NaN ₃ , 40% Glycerol.
Storage	Store at -20°C/1 year

Application Details

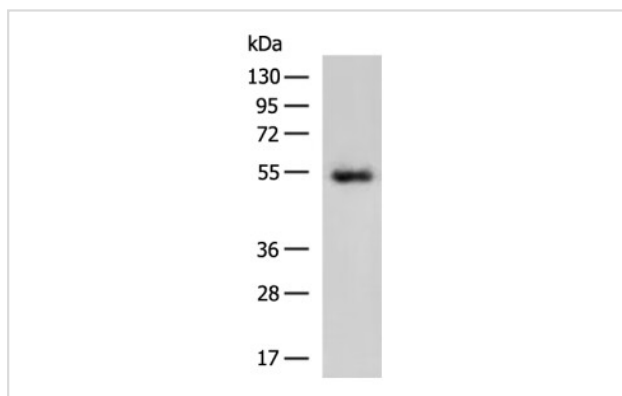
Predicted MW: 48kd

ELISA: 1:5000-1:10000

Western blotting: 1:500-1:2000

Immunohistochemistry: 1:50-1:100

Images



Gel: 8%SDS-PAGE

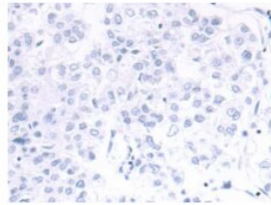
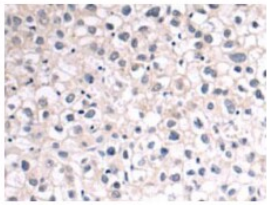
Lysate: 40 μ g

Lane: Human liver cancer tissue

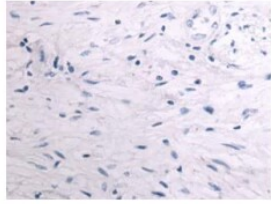
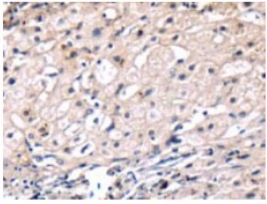
Primary antibody: SPAG4 Antibody at dilution 1/800

Secondary antibody: HRP-conjugated Goat anti rabbit IgG at 1/5000 dilution

Exposure time: 3 minutes



The image on the left is immunohistochemistry of paraffin-embedded Human liver cancer tissue using SPAG4 Antibody at dilution 1/50, on the right is treated with synthetic peptide. (Original magnification: $\times 200$)



The image on the left is immunohistochemistry of paraffin-embedded Human prostate cancer tissue using SPAG4 Antibody at dilution 1/50, on the right is treated with synthetic peptide. (Original magnification: $\times 200$)

Background

The mammalian sperm flagellum contains two cytoskeletal structures associated with the axoneme: the outer dense fibers surrounding the axoneme in the midpiece and principal piece and the fibrous sheath surrounding the outer dense fibers in the principal piece of the tail. Defects in these structures are associated with abnormal tail morphology, reduced sperm motility, and infertility. In the rat, the protein encoded by this gene associates with an outer dense fiber protein via a leucine zipper motif and localizes to the microtubules of the manchette and axoneme during sperm tail development.

Note: This product is for in vitro research use only