

GFRA4 Antibody

Catalog No: #31272

Package Size: #31272-1 50ul #31272-2 100ul

Orders: order@signalwayantibody.com

Support: tech@signalwayantibody.com

Description

Product Name	GFRA4 Antibody
Host Species	Rabbit
Clonality	Polyclonal
Applications	ELISA WB IHC
Species Reactivity	Hu Ms
Specificity	The antibody detects endogenous level of total GFRA4 protein.
Immunogen Type	Peptide
Immunogen Description	Synthetic peptide corresponding to a region derived from 266-279 amino acids of human GDNF family receptor alpha 4
Target Name	GFRA4
Other Names	GDNF family receptor alpha 4
Accession No.	Swiss-Prot:Q9GZZ7Gene ID:64096;
Uniprot	Q9GZZ7
GeneID	64096;
Concentration	1.1mg/ml
Formulation	Rabbit IgG in pH7.4 PBS, 0.05% NaN ₃ , 40% Glycerol.
Storage	Store at -20°C/1 year

Application Details

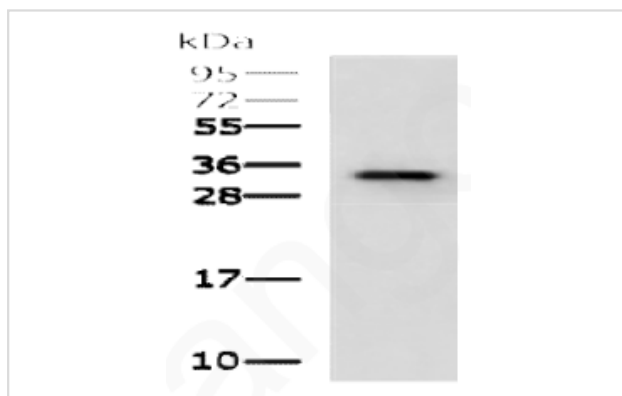
Predicted MW: 32kd

ELISA: 1:2000-1:5000

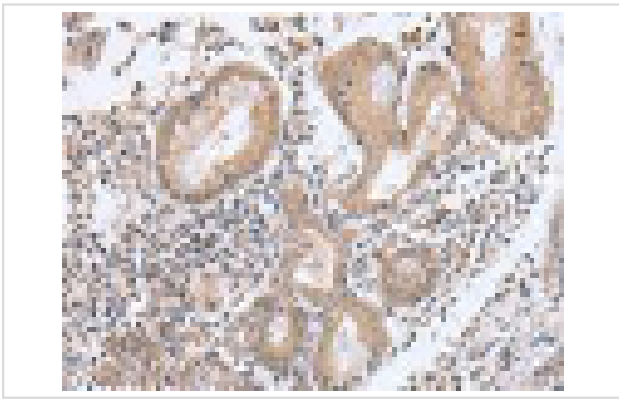
Western blotting: 1:200-1:1000

Immunohistochemistry: 1:30-1:150

Images



Gel: 12%SDS-PAGE Lysate: 40 μ g Lane: Mouse brain tissue lysate Primary antibody: GFRA4 Antibody at dilution 1/250 Secondary antibody: Goat anti rabbit IgG at 1/5000 dilution Exposure time: 2 minutes



The image is immunohistochemistry of paraffin-embedded Human esophagus cancer tissue using GFRA4 Antibody at dilution 1/40. (Original magnification: \times 200)

Background

The protein encoded by this gene is a member of the GDNF receptor family. It is a glycosylphosphatidylinositol(GPI)-linked cell surface receptor for persephin, and mediates activation of the RET tyrosine kinase receptor. This gene is a candidate gene for RET-associated diseases. Alternatively spliced transcript variants encoding different isoforms have been described for this gene.

Note: This product is for in vitro research use only