

AKR1C1 Antibody

Catalog No: #31278

Package Size: #31278-1 50ul #31278-2 100ul

Orders: order@signalwayantibody.com

Support: tech@signalwayantibody.com

Description

Product Name	AKR1C1 Antibody
Host Species	Rabbit
Clonality	Polyclonal
Applications	ELISA WB IHC
Species Reactivity	Hu Rt
Specificity	The antibody detects endogenous level of total AKR1C1 protein.
Immunogen Type	Peptide-KLH
Immunogen Description	Synthetic peptide corresponding to a region derived from 290-304 amino acids of human aldo-keto reductase family 1, member C1
Target Name	AKR1C1
Other Names	Aldo-keto reductase family 1, member C1, C9; DD1; DDH; DDH1; H-37; HBAB; MBAB; HAKRC; DD1/DD2; 2-ALPHA-HSD; 20-ALPHA-HSD
Accession No.	Swiss-Prot:Q04828Gene ID:1645;
Uniprot	Q04828
GeneID	1645;
Concentration	0.2mg/ml
Formulation	Rabbit IgG in pH7.4 PBS, 0.05% NaN ₃ , 40% Glycerol.
Storage	Store at -20°C/1 year

Application Details

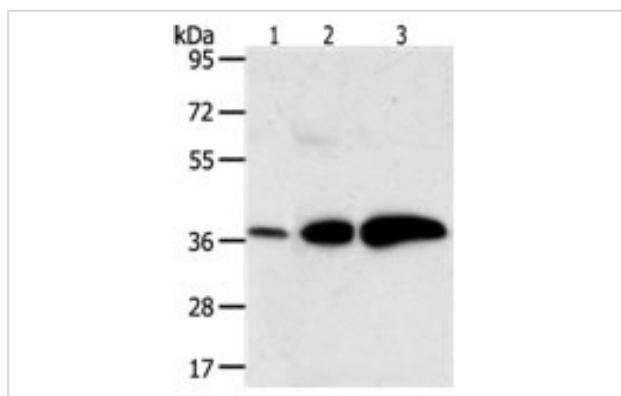
Predicted MW: 37kd

ELISA: 1:2000-1:5000

Western blotting: 1:500-1:2000

Immunohistochemistry: 1:50-1:200

Images



Gel: 10%SDS-PAGE

Lane1: Human liver cancer tissue lysate

Lane2: Human breast infiltrative duct tissue lysate

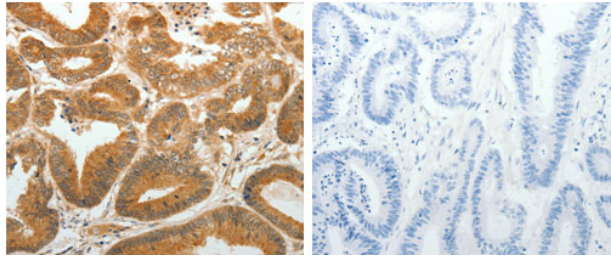
Lane3: Human fetal brain tissue lysate

Lysate: 27 µg per lane

Primary antibody: 1/500 dilution

Secondary antibody: Goat anti Rabbit IgG - H&L (HRP) at 1/10000 dilution

Exposure time: 2 minutes



The image on the left is immunohistochemistry of paraffin-embedded human colon cancer tissue using 31278 (AKR1C1 Antibody) at dilution 1/30, on the right is treated with the synthetic peptide.

Background

This gene encodes a member of the aldo/keto reductase superfamily, which consists of more than 40 known enzymes and proteins. These enzymes catalyze the conversion of aldehydes and ketones to their corresponding alcohols by utilizing NADH and/or NADPH as cofactors. The enzymes display overlapping but distinct substrate specificity. This enzyme catalyzes the reaction of progesterone to the inactive form 20-alpha-hydroxy-progesterone. This gene shares high sequence identity with three other gene members and is clustered with those three genes at chromosome 10p15-p14.?

Note: This product is for in vitro research use only