

NIT2 Antibody

Catalog No: #31280

Package Size: #31280-1 50ul #31280-2 100ul

Orders: order@signalwayantibody.com

Support: tech@signalwayantibody.com

Description

| | |
|-----------------------|---|
| Product Name | NIT2 Antibody |
| Host Species | Rabbit |
| Clonality | Polyclonal |
| Applications | ELISA WB IHC |
| Species Reactivity | Hu Ms |
| Specificity | The antibody detects endogenous level of total NIT2 protein. |
| Immunogen Type | Peptide |
| Immunogen Description | Synthetic peptide corresponding to a region derived from 264-276 amino acids of Human itrilase family, member 2 |
| Target Name | NIT2 |
| Other Names | Itrilase family, member 2 |
| Accession No. | Swiss-Prot:Q9NQR4Gene ID:56954; |
| Uniprot | Q9NQR4 |
| GeneID | 56954; |
| Concentration | 0.4mg/ml |
| Formulation | Rabbit IgG in pH7.4 PBS, 0.05% NaN ₃ , 40% Glycerol. |
| Storage | Store at -20°C/1 year |

Application Details

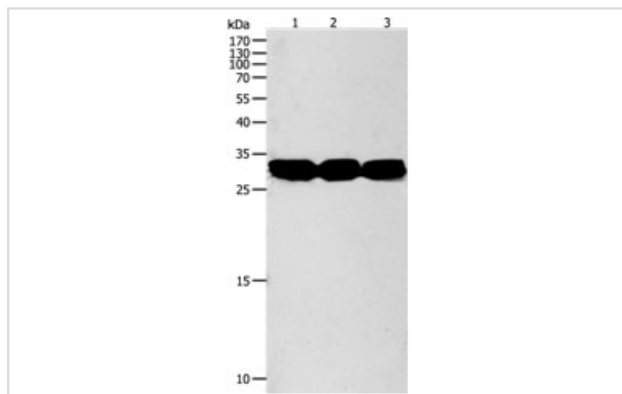
Predicted MW: 31kd

ELISA: 1:2000-1:10000

Western blotting: 1:1000-1:5000

Immunohistochemistry: 1:50-1:200

Images



Gel: 10%SDS-PAGE

Lane1: Mouse liver tissue lysate

Lane2: Mouse kidney tissue lysate

Lane3: RAW264.7 cell lysate

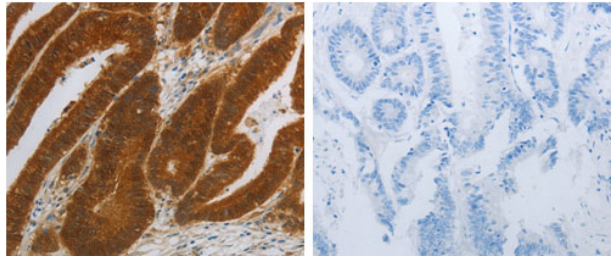
Lysates: 40 ug per lane

Primary antibody: 1/950 dilution

Secondary antibody: Goat anti Rabbit IgG - H&L (HRP) at

1/10000 dilution

Exposure time: 90 seconds



The image on the left is immunohistochemistry of paraffin-embedded human colon cancer tissue using 31280 (NIT2 Antibody) at dilution 1/40, on the right is treated with the synthetic peptide.

Background

Has a omega-amidase activity. The role of omega-amidase is to remove potentially toxic intermediates by converting alpha-ketoglutaramate and alpha-ketosuccinamate to biologically useful alpha-ketoglutarate and oxaloacetate, respectively. Overexpression decreases the colony-forming capacity of cultured cells by arresting cells in the G2 phase of the cell cycle.

Note: This product is for in vitro research use only