

OPRL1 Antibody

Catalog No: #31281

Package Size: #31281-1 50ul #31281-2 100ul

Orders: order@signalwayantibody.com

Support: tech@signalwayantibody.com

Description

Product Name	OPRL1 Antibody
Host Species	Rabbit
Clonality	Polyclonal
Applications	ELISA WB
Species Reactivity	Hu Ms Rt
Specificity	The antibody detects endogenous level of total OPRL1 protein.
Immunogen Type	Peptide-KLH
Immunogen Description	Synthetic peptide corresponding to a region derived from 360-380 amino acids of Human opiate receptor-like 1
Target Name	OPRL1
Other Names	Opiate receptor-like 1, OOR, ORL1, KOR-3, NOCIR
Accession No.	Swiss-Prot:P41146Gene ID:4987;
Uniprot	P41146
GeneID	4987;
Concentration	0.3mg/ml
Formulation	Rabbit IgG in pH7.4 PBS, 0.05% NaN ₃ , 40% Glycerol.
Storage	Store at -20°C/1 year

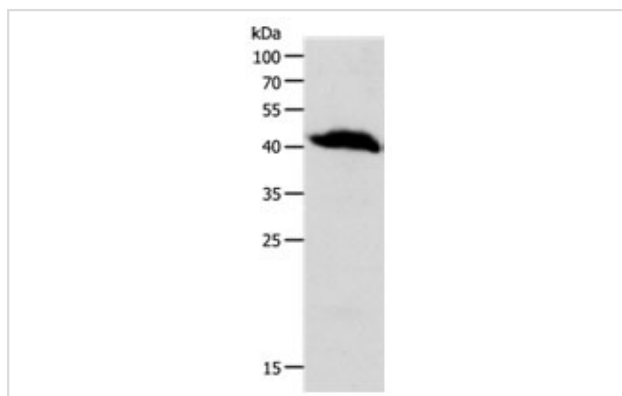
Application Details

Predicted MW: 41kd

ELISA: 1:1000-1:5000

Western blotting: 1:500-1:2000

Images



Gel: 10%SDS-PAGE

Lysate: 40 µg Human liver cancer tissue lysate

Primary antibody: 1/900 dilution

Secondary antibody: Goat anti Rabbit IgG - H&L (HRP) at 1/10000 dilution

Exposure time: 1 minute

Background

The protein encoded by this gene is a G protein-coupled receptor whose expression can be induced by phytohemagglutinin. The encoded integral membrane protein is a receptor for the 17 aa neuropeptide nociceptin/orphanin FQ. This gene may be involved in the regulation of numerous brain activities, particularly instinctive and emotional behaviors. A promoter for this gene also functions as a promoter for another gene, regulator of G-protein signalling 19 (RGS19), located on the opposite strand. Three transcript variants encoding the same protein have been found for this gene.

Note: This product is for in vitro research use only