

PAK1 Antibody

Catalog No: #31287

Package Size: #31287-1 50ul #31287-2 100ul

Orders: order@signalwayantibody.com

Support: tech@signalwayantibody.com

Description

Product Name	PAK1 Antibody
Host Species	Rabbit
Clonality	Polyclonal
Applications	ELISA WB IHC
Species Reactivity	Hu Ms Rt
Specificity	The antibody detects endogenous level of total PAK1 protein.
Immunogen Type	Peptide-KLH
Immunogen Description	Synthetic peptide corresponding to a region derived from 225-238 amino acids of Human p21 protein (Cdc42/Rac)-activated kinase
Target Name	PAK1
Other Names	P21 protein (Cdc42/Rac)-activated kinase 1, PAKalpha
Accession No.	Swiss-Prot:Q13153Gene ID:5058;
Uniprot	Q13153
GeneID	5058;
Formulation	Rabbit IgG in pH7.4 PBS, 0.05% NaN ₃ , 40% Glycerol.
Storage	Store at -20°C/1 year

Application Details

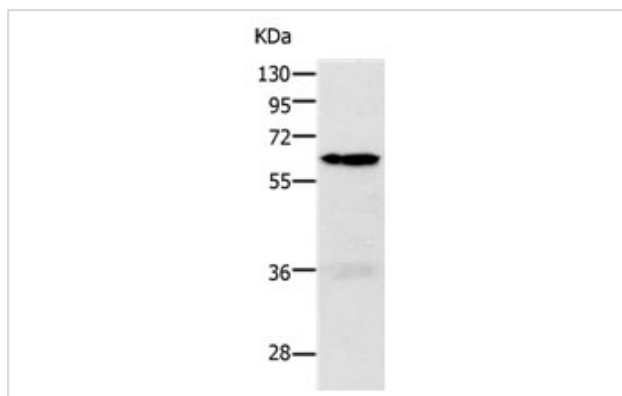
Predicted MW: 61kd

ELISA: 1:1000-1:5000

Western blotting: 1:500-1:2000

Immunohistochemistry: 1:25-1:100

Images



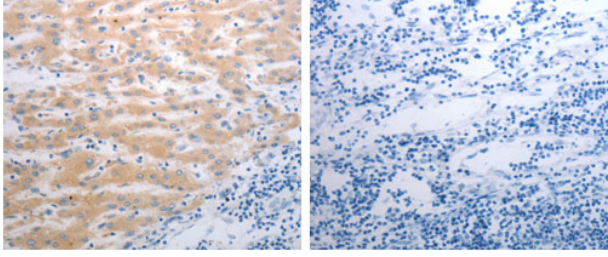
Gel: 10%SDS-PAGE

Lysate: 40 µg 293T cell lysate

Primary antibody: 1/700 dilution

Secondary antibody: Goat anti Rabbit IgG - H&L (HRP) at 1/10000 dilution

Exposure time: 1 minute



The image on the left is immunohistochemistry of paraffin-embedded human liver cancer tissue using 31287 (PAK1 Antibody) at dilution 1/40, on the right is treated with the synthetic peptide.

Background

This gene encodes a family member of serine/threonine p21-activating kinases, known as PAK proteins. These proteins are critical effectors that link RhoGTPases to cytoskeleton reorganization and nuclear signaling, and they serve as targets for the small GTP binding proteins Cdc42 and Rac. This specific family member regulates cell motility and morphology. Alternatively spliced transcript variants encoding different isoforms have been found for this gene.?

Note: This product is for in vitro research use only