

## PARP1 Antibody

Catalog No: #31288

Package Size: #31288-1 50ul #31288-2 100ul

Orders: order@signalwayantibody.com

Support: tech@signalwayantibody.com

## Description

Product Name	PARP1 Antibody
Host Species	Rabbit
Clonality	Polyclonal
Applications	ELISA WB IHC
Species Reactivity	Hu
Specificity	The antibody detects endogenous level of total PARP1 protein.
Immunogen Type	Peptide
Immunogen Description	Synthetic peptide corresponding to a region derived from 12-21 amino acids of human poly (ADP-ribose) polymerase 1
Target Name	PARP1
Other Names	poly (ADP-ribose) polymerase 1, PARP, PPOL, ADPRT, ARTD1, ADPRT1, PARP-1, ADPRT 1, pADPRT-1
Accession No.	Swiss-Prot:P09874Gene ID:142;
Uniprot	P09874
GeneID	142;
Formulation	Rabbit IgG in pH7.4 PBS, 0.05% NaN <sub>3</sub> , 40% Glycerol.
Storage	Store at -20°C/1 year

## Application Details

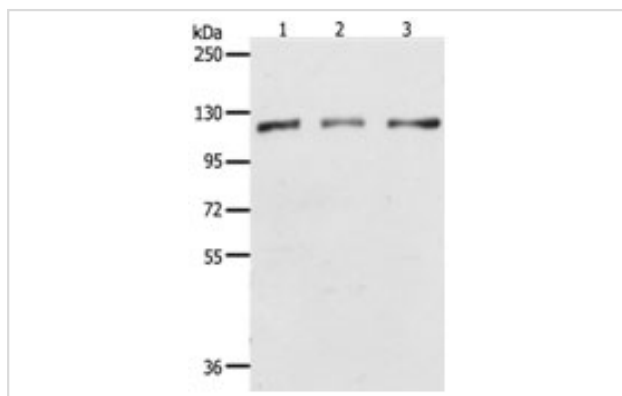
Predicted MW: 113kd

ELISA: 1:2000-1:5000

Western blotting: 1:500-1:2000

Immunohistochemistry: 1:50-1:200

## Images



Gel: 8%SDS-PAGE

Lane1: HeLa cell lysate

Lane2: K562 cell lysate

Lane3: Jurkat cell lysate

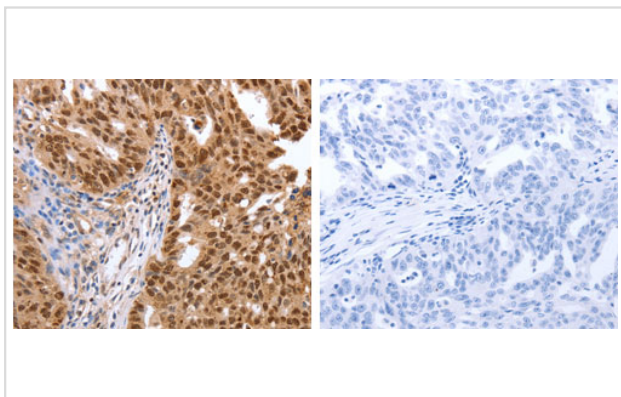
Lysates: 40 ug per lane

Primary antibody: 1/350 dilution

Secondary antibody: Goat anti Rabbit IgG - H&amp;L (HRP) at

1/10000 dilution

Exposure time: 1 second



The image on the left is immunohistochemistry of paraffin-embedded human ovarian cancer tissue using 31288 (PARP1 Antibody) at dilution 1/40, on the right is treated with the synthetic peptide.

## Background

This gene encodes a chromatin-associated enzyme, poly(ADP-ribose)transferase, which modifies various nuclear proteins by poly(ADP-ribose)ation. The modification is dependent on DNA and is involved in the regulation of various important cellular processes such as differentiation, proliferation, and tumor transformation and also in the regulation of the molecular events involved in the recovery of cell from DNA damage. In addition, this enzyme may be the site of mutation in Fanconi anemia, and may participate in the pathophysiology of type I diabetes.

Note: This product is for in vitro research use only