

SLC22A3 Antibody

Catalog No: #31291

Package Size: #31291-1 50ul #31291-2 100ul

Orders: order@signalwayantibody.com

Support: tech@signalwayantibody.com

Description

Product Name	SLC22A3 Antibody
Host Species	Rabbit
Clonality	Polyclonal
Applications	ELISA WB IHC
Species Reactivity	Hu
Specificity	The antibody detects endogenous level of total SLC22A3 protein.
Immunogen Type	Peptide
Immunogen Description	Synthetic peptide corresponding to a region derived from 336-350 amino acids of human solute carrier family 22 (extraneuronal monoamine transporter), member 3
Target Name	SLC22A3
Other Names	Solute carrier family 22 (extraneuronal monoamine transporter), member 3, EMT; EMTH; OCT3
Accession No.	Swiss-Prot:O75751Gene ID:6581;
Uniprot	O75751
GeneID	6581;
Concentration	0.4mg/ml
Formulation	Rabbit IgG in pH7.4 PBS, 0.05% NaN ₃ , 40% Glycerol.
Storage	Store at -20°C/1 year

Application Details

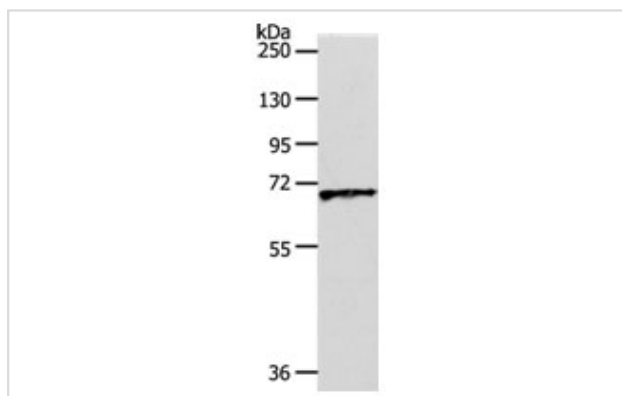
Predicted MW: 61kd

ELISA: 1:2000-1:5000

Western blotting: 1:500-1:2000

Immunohistochemistry: 1:25-1:100

Images



Gel: 10%SDS-PAGE

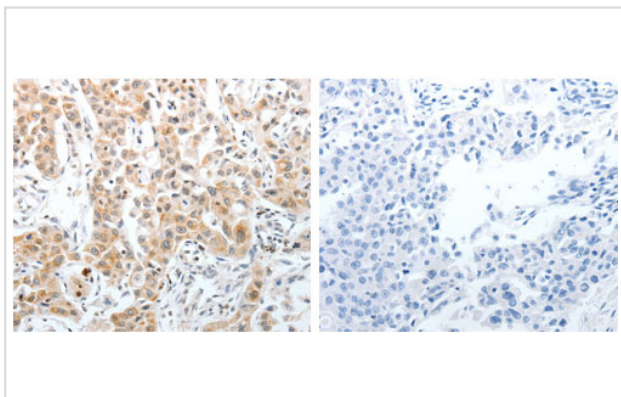
Lane1: Human liver cancer tissue lysate

Lysate: 40ug per lane

Primary antibody: 1/600 dilution

Secondary antibody: Goat anti Rabbit IgG - H&L (HRP) at 1/10000 dilution

Exposure time: 1 minute



The image on the left is immunohistochemistry of paraffin-embedded human lung cancer tissue using 31291 (SLC22A3 Antibody) at dilution 1/40, on the right is treated with the synthetic peptide.

Background

Polyspecific organic cation transporters in the liver, kidney, intestine, and other organs are critical for elimination of many endogenous small organic cations as well as a wide array of drugs and environmental toxins. This gene is one of three similar cation transporter genes located in a cluster on chromosome 6. The encoded protein contains twelve putative transmembrane domains and is a plasma integral membrane protein.?

Note: This product is for in vitro research use only