

SLC32A1 Antibody

Catalog No: #31292

Package Size: #31292-1 50ul #31292-2 100ul

Orders: order@signalwayantibody.com

Support: tech@signalwayantibody.com

Description

Product Name	SLC32A1 Antibody
Host Species	Rabbit
Clonality	Polyclonal
Applications	ELISA WB IHC
Species Reactivity	Hu Ms
Specificity	The antibody detects endogenous level of total SLC32A1 protein.
Immunogen Type	Peptide-KLH
Immunogen Description	Synthetic peptide corresponding to a region derived from 63-76 amino acids of human solute carrier family 32 (GABA vesicular transporter), member 1
Target Name	SLC32A1
Other Names	solute carrier family 32 (GABA vesicular transporter), member 1, VGAT, VIAAT
Accession No.	Swiss-Prot:Q9H598Gene ID:140679;
Uniprot	Q9H598
GeneID	140679;
Formulation	Rabbit IgG in pH7.4 PBS, 0.05% NaN ₃ , 40% Glycerol.
Storage	Store at -20°C/1 year

Application Details

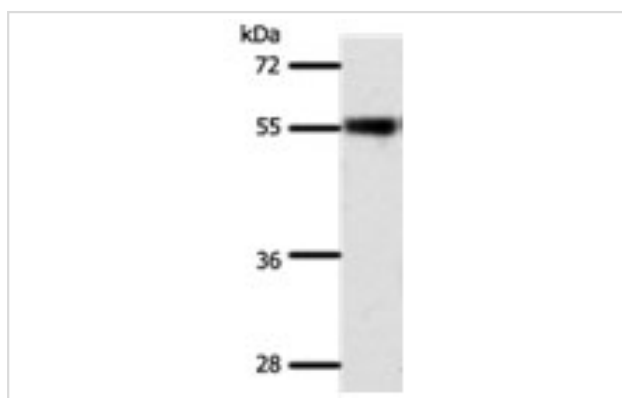
Predicted MW: 57kd

ELISA: 1:2000-1:5000

Western blotting: 1:500-1:2000

Immunohistochemistry: 1:50-1:200

Images



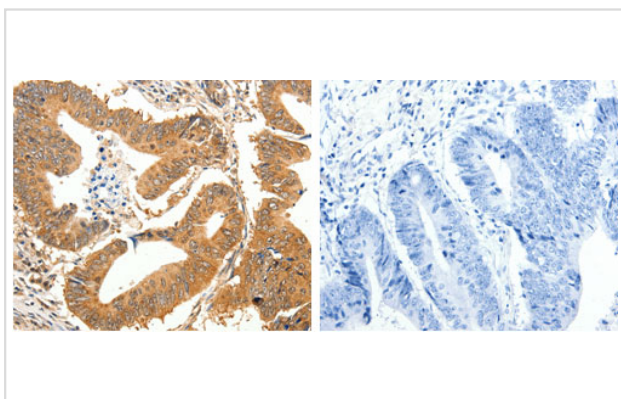
Gel: 10%SDS-PAGE

Lysate: 40 µg Mouse eye tissue lysate

Primary antibody: 1/500 dilution

Secondary antibody: Goat anti Rabbit IgG - H&L (HRP) at 1/10000 dilution

Exposure time: 20 seconds



The image on the left is immunohistochemistry of paraffin-embedded human colon cancer tissue using 31292 (SLC32A1 Antibody) at dilution 1/35, on the right is treated with the synthetic peptide.

Background

Vesicular inhibitory amino acid transporter is a protein that in humans is encoded by the SLC32A1 gene. The protein encoded by this gene is an integral membrane protein involved in gamma-aminobutyric acid (GABA) and glycine uptake into synaptic vesicles. The encoded protein is a member of amino acid/polyamine transporter family II.

Note: This product is for in vitro research use only