

SLC33A1 Antibody

Catalog No: #31293

Package Size: #31293-1 50ul #31293-2 100ul

Orders: order@signalwayantibody.com

Support: tech@signalwayantibody.com

Description

Product Name	SLC33A1 Antibody
Host Species	Rabbit
Clonality	Polyclonal
Applications	ELISA WB
Species Reactivity	Hu Ms Rt
Specificity	The antibody detects endogenous level of total SLC33A1 protein.
Immunogen Type	Peptide-KLH
Immunogen Description	Synthetic peptide corresponding to a region derived from 240-254 amino acids of human solute carrier family 33 (acetyl-CoA transporter), member 1
Target Name	SLC33A1
Other Names	solute carrier family 33 (acetyl-CoA transporter), member 1, AT1, AT-1, ACATN, SPG42, CCHLND
Accession No.	Swiss-Prot:O00400Gene ID:9197;
Uniprot	O00400
GeneID	9197;
Concentration	0.5 mg/ml
Formulation	Rabbit IgG in pH7.4 PBS, 0.05% NaN ₃ , 40% Glycerol.
Storage	Store at -20°C/1 year

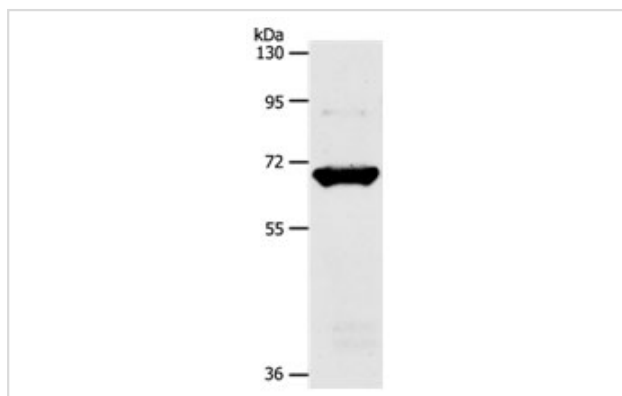
Application Details

Predicted MW: 61kd

ELISA: 1:2000-1:10000

Western blotting: 1:1000-1:5000

Images



Gel: 10%SDS-PAGE

Lysate: 40 µg Mouse liver tissue lysate

Primary antibody: 1/1100 dilution

Secondary antibody: Goat anti Rabbit IgG - H&L (HRP) at

1/10000 dilution

Exposure time: 1 minute

Background

The protein encoded by this gene is required for the formation of O-acetylated (Ac) gangliosides. The encoded protein is predicted to contain 6 to 10 transmembrane domains, and a leucine zipper motif in transmembrane domain III. Defects in this gene have been reported to cause spastic paraplegia autosomal dominant type 42 (SPG42) in one Chinese family, but not in similar patients of European descent. Two transcript variants encoding the same protein have been found for this gene.

Note: This product is for in vitro research use only