

## SFTPA1 Antibody

Catalog No: #31294

Package Size: #31294-1 50ul #31294-2 100ul

Orders: order@signalwayantibody.com

Support: tech@signalwayantibody.com

## Description

Product Name	SFTPA1 Antibody
Host Species	Rabbit
Clonality	Polyclonal
Applications	ELISA WB
Species Reactivity	Hu
Specificity	The antibody detects endogenous level of total SFTPA1 protein.
Immunogen Type	Peptide-KLH
Immunogen Description	Synthetic peptide corresponding to a region derived from 223-236 amino acids of human surfactant protein A1
Target Name	SFTPA1
Other Names	surfactant protein A1, SPA, PSAP, PSPA, SP-A, SPA1, PSP-A, SFTP1, SP-A1, COLEC4, SFTPA1B
Accession No.	Swiss-Prot:Q8IWL2Gene ID:653509;
Uniprot	Q8IWL2
GeneID	653509;
Concentration	0.3mg/ml
Formulation	Rabbit IgG in pH7.4 PBS, 0.05% NaN <sub>3</sub> , 40% Glycerol.
Storage	Store at -20°C/1 year

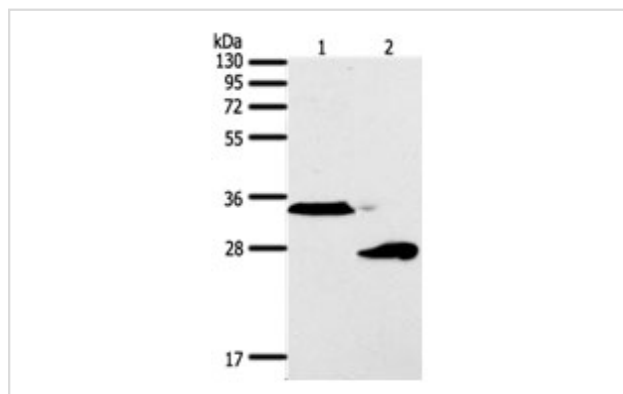
## Application Details

Predicted MW: 28kd

ELISA: 1:1000-1:5000

Western blotting: 1:200-1:1000

## Images



Gel: 12%SDS-PAGE

Lane1: A549 cell lysate

Lane2: Human fetal lung tissue lysate

Lysates: 50 µg per lane

Primary antibody: 1/300 dilution

Secondary antibody: Goat anti Rabbit IgG - H&amp;L (HRP) at 1/10000 dilution

Exposure time: 1 minute

## Background

This gene encodes a lung surfactant protein that is a member of a subfamily of C-type lectins called collectins. The encoded protein binds specific

carbohydrate moieties found on lipids and on the surface of microorganisms. This protein plays an essential role in surfactant homeostasis and in the defense against respiratory pathogens. Mutations in this gene are associated with idiopathic pulmonary fibrosis. Alternate splicing results in multiple transcript variants.?

---

Note: This product is for in vitro research use only