

## AADACL4 Antibody

Catalog No: #31298

Package Size: #31298-1 50ul #31298-2 100ul

Orders: order@signalwayantibody.com

Support: tech@signalwayantibody.com

## Description

Product Name	AADACL4 Antibody
Host Species	Rabbit
Clonality	Polyclonal
Applications	ELISA WB
Species Reactivity	Hu
Specificity	The antibody detects endogenous level of total AADACL4 protein.
Immunogen Type	Peptide
Immunogen Description	Synthetic peptide corresponding to a region derived from 71-85 amino acids of human arylacetamide deacetylase-like 4
Target Name	AADACL4
Other Names	Arylacetamide deacetylase-like 4
Accession No.	Swiss-Prot:Q5VUY2Gene ID:343066;
Uniprot	Q5VUY2
GeneID	343066;
Formulation	Rabbit IgG in pH7.4 PBS, 0.05% NaN <sub>3</sub> , 40% Glycerol.
Storage	Store at -20°C/1 year

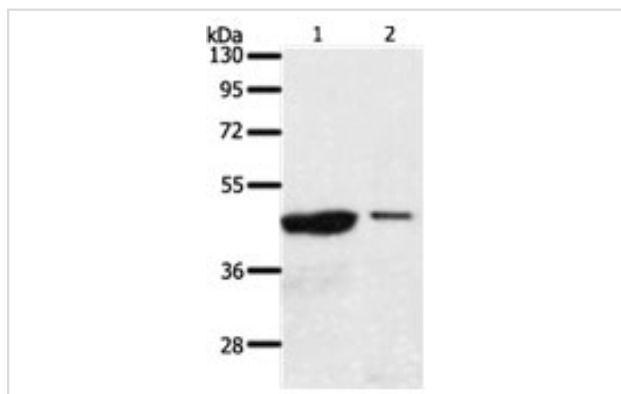
## Application Details

Predicted MW: 46kd

ELISA: 1:1000-1:2000

Western blotting: 1:200-1:1000

## Images



Gel: 10%SDS-PAGE  
 Lane1: 231 cell lysate  
 Lane2: A549 cell lysate  
 Lysates: 40 ug per lane  
 Primary antibody: 1/100 dilution  
 Secondary antibody: Goat anti Rabbit IgG - H&L (HRP) at 1/10000 dilution  
 Exposure time: 30 minutes

## Background

Arylacetamide deacetylase-like 4 is a protein in humans that is encoded by the AADACL4 gene. It belongs to the 'GDXXG' lipolytic enzyme family.

The subcellular location of this protein in the membrane, it is single-pass type II membrane protein. It has signal-anchor, transmembrane and transmembrane helix domain. Function as Hydrolase.

---

Note: This product is for in vitro research use only