

## PLC gamma 2 Antibody

Catalog No: #29229

Orders: [order@signalwayantibody.com](mailto:order@signalwayantibody.com)Support: [tech@signalwayantibody.com](mailto:tech@signalwayantibody.com)

## Description

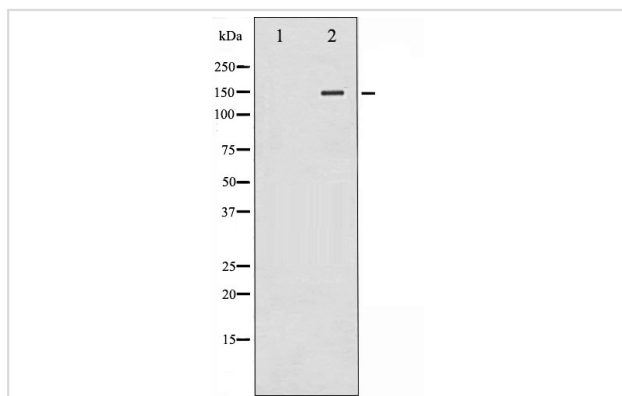
Product Name	PLC gamma 2 Antibody
Host Species	Rabbit
Clonality	Polyclonal
Purification	Immunogen affinity purified
Applications	WB IHC
Species Reactivity	Hu Ms Rt
Specificity	PLCG2 Antibody detects endogenous levels of total PLCG2
Immunogen Type	Peptide
Immunogen Description	A synthesized peptide derived from human PLCG2
Target Name	PLC gamma 2
Other Names	1-phosphatidylinositol-4,5-bisphosphate phosphodiesterase gamma 2, EC 3.1.4.11, PLC-IV, PLC-gamma2, Phospholipase C-gamma-2
Accession No.	Swiss-Prot#: P16885
Uniprot	P16885
GeneID	5336;
SDS-PAGE MW	150KD
Concentration	1.0mg/ml
Formulation	Rabbit IgG in phosphate buffered saline , pH 7.4, 150mM NaCl, 0.02% sodium azide and 50% glycerol.
Storage	Store at -20°C/1 year

## Application Details

WB 1:500-1:2000

IHC 1:50-1:200

## Images



Western blot analysis of PLCG2 expression in COLO205 whole cell lysates. The lane on the left is treated with the antigen-specific peptide.

## Background

---

Enzymes of the phospholipase C family catalyze the hydrolysis of phospholipids to yield diacylglycerols and water-soluble phosphorylated derivatives of the lipid head groups. A number of these enzymes have specificity for phosphoinositides.

---

Note: This product is for in vitro research use only