

PKC theta Antibody

Catalog No: #29261

Orders: order@signalwayantibody.comSupport: tech@signalwayantibody.com

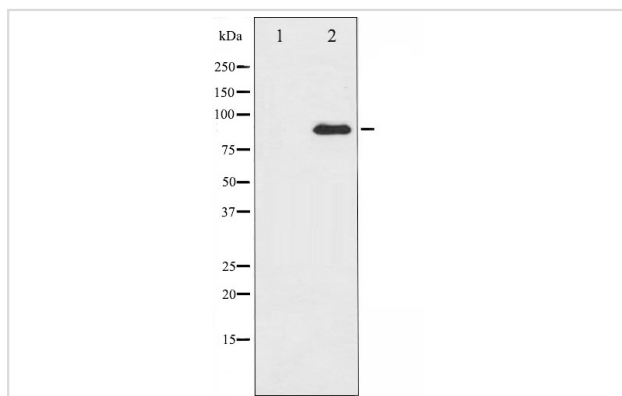
Description

Product Name	PKC theta Antibody
Host Species	Rabbit
Clonality	Polyclonal
Purification	Immunogen affinity purified
Applications	WB
Species Reactivity	Hu Ms Rt
Specificity	A synthesized peptide derived from human PKC theta, corresponding to a region within C-terminal amino acids.
Immunogen Type	Peptide
Immunogen Description	A synthesized peptide derived from human PKC theta, corresponding to a region within C-terminal amino acids.
Target Name	PKC theta
Other Names	nPKC-theta; PRKCT; Protein kinase C theta; Protein kinase C theta type;
Accession No.	Swiss-Prot#: Q04759 Gene id:5588
Uniprot	Q04759
GeneID	5588;
SDS-PAGE MW	80KD
Concentration	1.0mg/ml
Formulation	Rabbit IgG in phosphate buffered saline , pH 7.4, 150mM NaCl, 0.02% sodium azide and 50% glycerol.
Storage	Store at -20°C/1 year

Application Details

WB 1:500-1:2000

Images



Western blot analysis of PKC theta expression in PMA treated Jurkat whole cell lysates, The lane on the left is treated with the antigen-specific peptide.

Background

Protein kinase C (PKC) is a family of serine- and threonine-specific protein kinases that can be activated by calcium and the second messenger diacylglycerol. PKC family members phosphorylate a wide variety of protein targets and are known to be involved in diverse cellular signaling pathways. PKC family members also serve as major receptors for phorbol esters, a class of tumor promoters.

Note: This product is for in vitro research use only