

Description

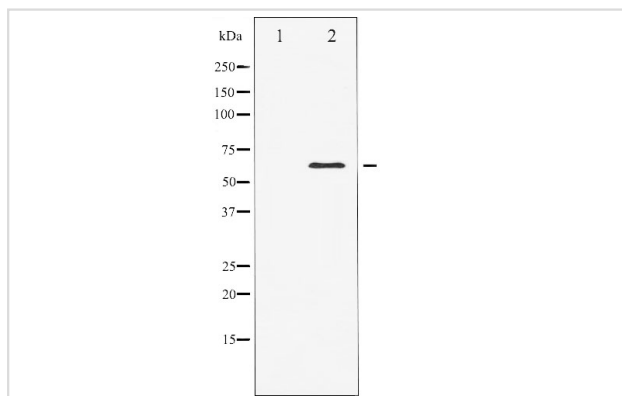
Product Name	ELK Antibody
Host Species	Rabbit
Clonality	Polyclonal
Purification	Immunogen affinity purified
Applications	WB IHC
Species Reactivity	Hu Ms Rt
Specificity	Elk1 Antibody detects endogenous levels of total Elk1
Immunogen Type	Peptide
Immunogen Description	A synthesized peptide derived from human Elk1
Target Name	ELK
Other Names	ELK1, ETS-domain protein ELK-1, ETS-domain protein Elk-1
Accession No.	Swiss-Prot#oO P19419
Uniprot	P19419
GeneID	2002;
SDS-PAGE MW	62KD
Concentration	1.0mg/ml
Formulation	Rabbit IgG in phosphate buffered saline , pH 7.4, 150mM NaCl, 0.02% sodium azide and 50% glycerol.
Storage	Store at -20°C/1 year

Application Details

WB 1:500-1:2000

HC 1:50-1:200

Images



Western blot analysis of Elk1 expression in heatshock treated HeLa whole cell lysates, The lane on the left is treated with the antigen-specific peptide.

Background

This gene is a member of the Ets family of transcription factors and of the ternary complex factor (TCF) subfamily. Proteins of the TCF subfamily form

a ternary complex by binding to the the serum response factor and the serum reponse element in the promoter of the c-fos proto-oncogene.

Note: This product is for in vitro research use only