

## ATPase Antibody

Catalog No: #29094

Orders: order@signalwayantibody.com

Support: tech@signalwayantibody.com

## Description

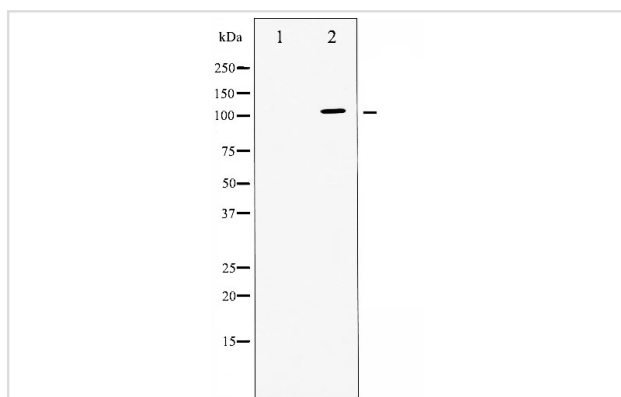
Product Name	ATPase Antibody
Host Species	Rabbit
Clonality	Polyclonal
Purification	Immunogen affinity purified
Applications	WB IHC
Species Reactivity	Hu Ms Rt
Specificity	ATPase Antibody detects endogenous levels of total ATPase
Immunogen Type	Peptide
Immunogen Description	A synthesized peptide derived from human ATPase
Target Name	ATPase
Other Names	A1A1, AT1A1, ATP1A1, Na+/K+ transporting, alpha 1 polypeptide, EC 3.6.3.9, Hypothetical protein MGC38419, Na+/K+ ATPase 1, Na,K-ATPase 1, Sodium pump 1, Sodium/potassium-transporting ATPase alpha-1 chain precursor
Accession No.	Swiss-Prot#: P05023
Uniprot	P05023
GeneID	476;
SDS-PAGE MW	112KD
Concentration	1.0mg/ml
Formulation	Rabbit IgG in phosphate buffered saline , pH 7.4, 150mM NaCl, 0.02% sodium azide and 50% glycerol.
Storage	Store at -20°C/1 year

## Application Details

WB: 1:500-1:2000

IHC: 1:50-1:200

## Images



Western blot analysis of ATPase expression in PMA treated 293 whole cell lysates, The lane on the left is treated with the antigen-specific peptide.

## Background

---

The protein encoded by this gene belongs to the family of P-type cation transport ATPases, and to the subfamily of Na<sup>+</sup>/K<sup>+</sup> -ATPases. Na<sup>+</sup>/K<sup>+</sup> -ATPase is an integral membrane protein responsible for establishing and maintaining the electrochemical gradients of Na and K ions across the plasma membrane.

---

Note: This product is for in vitro research use only