

ERK1/2 Antibody

Catalog No: #29162

Orders: order@signalwayantibody.comSupport: tech@signalwayantibody.com

Description

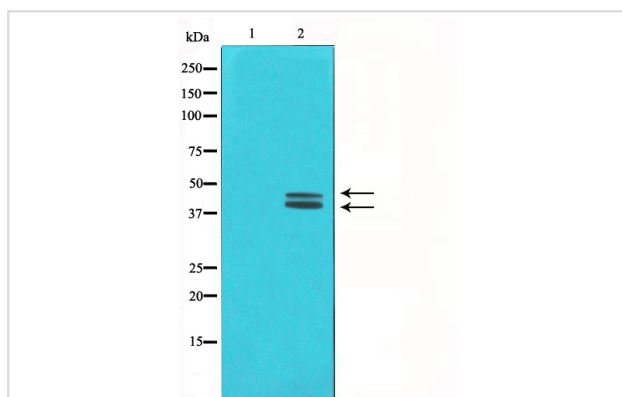
Product Name	ERK1/2 Antibody
Host Species	Rabbit
Clonality	Polyclonal
Purification	Affinity-chromatography
Applications	WB IHC
Species Reactivity	Hu Ms Rt
Specificity	ERK1/2 antibody detects endogenous levels of total ERK1/2
Immunogen Type	Peptide
Immunogen Description	A synthesized peptide derived from human ERK1/2
Target Name	ERK1/2
Other Names	Extracellular signal-regulated kinase 1, ERK-1, Insulin-stimulated MAP2 kinase, MAP kinase 1, MAPK 1, p44-ERK1, ERT2, p44-MAPK, Microtubule-associated protein 2 kinase extracellular signal-regulated kinase 1, ERK-1, Insulin-stimulated MAP2 kinase, MAP kin
Accession No.	Swiss-Prot: P27361/P28482Gene ID:7531
Uniprot	P27361/P28482
GeneID	7531;
SDS-PAGE MW	42,44KD
Concentration	1.0mg/ml
Formulation	Rabbit IgG in phosphate buffered saline , pH 7.4, 150mM NaCl, 0.02% sodium azide and 50% glycerol.
Storage	Store at -20°C/1 year

Application Details

WB: 1:500~1:3000

IHC: 1:50~1:200

Images



Western blot analysis on COLO205 cell lysate using ERK1/2 Antibody

Background

ERK1 p42 MAP kinase plays a critical role in the regulation of cell growth and differentiation. Activated by a wide variety of extracellular signals including growth and neurotrophic factors, cytokines, hormones and neurotransmitters. ERK2 p44 MAP kinase plays a critical role in the regulation of cell growth and differentiation. Acts as an integration point for multiple biochemical signals, and is involved in a wide variety of cellular processes such as proliferation, differentiation, transcription regulation and development.

Note: This product is for in vitro research use only