

## p21Cip1(Ab-145) Antibody

Catalog No: #21149

Package Size: #21149-1 50ul #21149-2 100ul

Orders: order@signalwayantibody.com

Support: tech@signalwayantibody.com

## Description

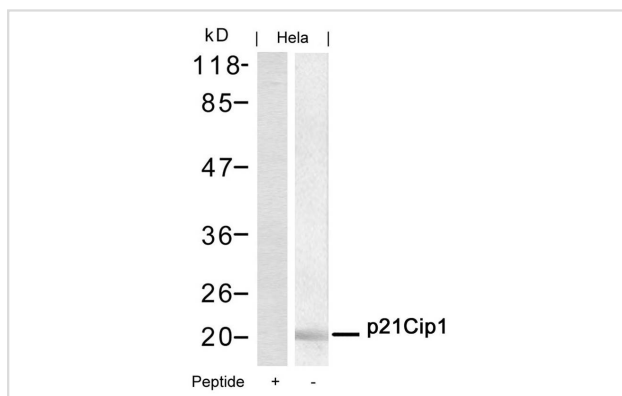
Product Name	p21Cip1(Ab-145) Antibody
Host Species	Rabbit
Clonality	Polyclonal
Purification	Antibodies were produced by immunizing rabbits with synthetic peptide and KLH conjugates. Antibodies were purified by affinity-chromatography using epitope-specific peptide.
Applications	WB
Species Reactivity	Hu
Specificity	The antibody detects endogenous level of total p21Cip1 protein.
Immunogen Type	Peptide-KLH
Immunogen Description	Peptide sequence around aa.143~147 (R-Q-T-S-M) derived from Human p21Cip1.
Target Name	p21Cip1
Other Names	CAP20; CDK-interacting protein 1; CDKN1; CDKN1A; CDN1A
Accession No.	Swiss-Prot: P38936NCBI Protein: NP_000380.1
Uniprot	P38936
GeneID	1026;
Concentration	1.0mg/ml
Formulation	Supplied at 1.0mg/mL in phosphate buffered saline (without Mg <sup>2+</sup> and Ca <sup>2+</sup> ), pH 7.4, 150mM NaCl, 0.02% sodium azide and 50% glycerol.
Storage	Store at -20°C for long term preservation (recommended). Store at 4°C for short term use.

## Application Details

Predicted MW: 21kd

Western blotting: 1:500~1:1000

## Images



Western blot analysis of extracts from HeLa cells using p21Cip1(Ab-145) Antibody #21149 and the same antibody preincubated with blocking peptide.

## Background

---

May be the important intermediate by which p53 mediates its role as an inhibitor of cellular proliferation in response to DNA damage. Binds to and inhibits cyclin-dependent kinase activity, preventing phosphorylation of critical cyclin-dependent kinase substrates and blocking cell cycle progression.

Ocker M Int,et al. (2007)J Biochem Cell Biol. 39(7-8):1367-74.

Dangi S, et al.(2006)Cell Prolif. 39(4):261-79.

Chen J,et al.(2006)Am J Physiol Heart Circ Physiol. 290(4):H1575-86

---

Note: This product is for in vitro research use only