

## AML1 (Phospho-Ser276) Antibody

Catalog No: #12002

Package Size: #12002-1 50ul #12002-2 100ul

Orders: [order@signalwayantibody.com](mailto:order@signalwayantibody.com)Support: [tech@signalwayantibody.com](mailto:tech@signalwayantibody.com)

## Description

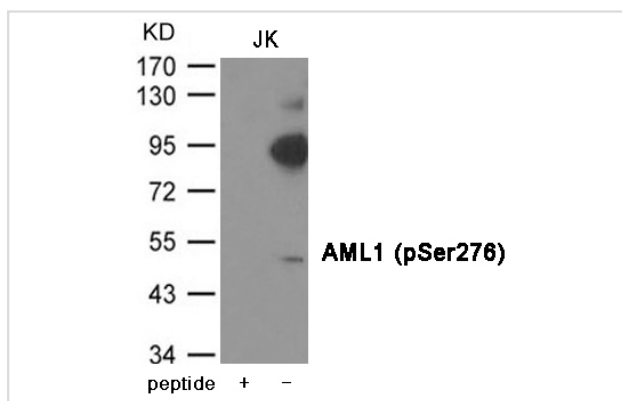
Product Name	AML1 (Phospho-Ser276) Antibody
Host Species	Rabbit
Clonality	Polyclonal
Purification	Antibodies were produced by immunizing rabbits with synthetic phosphopeptide and KLH conjugates. Antibodies were purified by affinity-chromatography using epitope-specific phosphopeptide. Non-phospho specific antibodies were removed by chromatography using non-phosphopeptide.
Applications	WB
Species Reactivity	Hu Ms Rt
Specificity	The antibody detects endogenous level of AML1 only when phosphorylated at Serine 276.
Immunogen Type	Peptide-KLH
Immunogen Description	Peptide sequence around phosphorylation site of serine 276 (P-I-S(p)-P-G) derived from Human AML1.
Target Name	AML1
Modification	Phospho
Other Names	CBFA2, EVI-1, AMLCR1, PEBP2aB, AML1-EVI-1
Accession No.	Swiss-Prot#: Q01196; NCBI Gene#: 861; NCBI Protein#: NP_001001890.1
Uniprot	Q01196
GeneID	861;
SDS-PAGE MW	50kd
Concentration	1.0mg/ml
Formulation	Supplied at 1.0mg/mL in phosphate buffered saline (without Mg <sup>2+</sup> and Ca <sup>2+</sup> ), pH 7.4, 150mM NaCl, 0.02% sodium azide and 50% glycerol.
Storage	Store at -20°C/1 year

## Application Details

Predicted MW: 50kd

Western blotting: 1:500~1:1000

## Images



Western blot analysis of extracts from JK cells using AML1 (Phospho-Ser276) Antibody #12002. The lane on the left is treated with the antigen-specific peptide.

## Background

CBF binds to the core site, 5'-PYGPYGGT-3', of a number of enhancers and promoters, including murine leukemia virus, polyomavirus enhancer, T-cell receptor enhancers, LCK, IL-3 and GM-CSF promoters. The alpha subunit binds DNA and appears to have a role in the development of normal hematopoiesis. Isoform AML-1L interferes with the transactivation activity of RUNX1. Acts synergistically with ELF4 to transactivate the IL-3 promoter and with ELF2 to transactivate the mouse BLK promoter. Inhibits KAT6B-dependent transcriptional activation.

Note: This product is for in vitro research use only