

GRF-1 (Phospho-Tyr1105) Antibody

Catalog No: #12009

Package Size: #12009-1 50ul #12009-2 100ul

Orders: order@signalwayantibody.comSupport: tech@signalwayantibody.com

Description

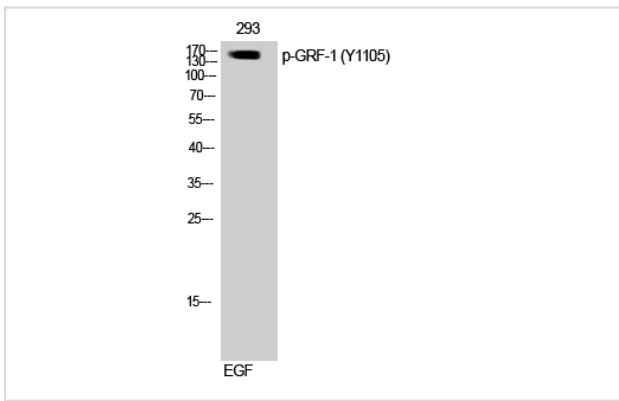
Product Name	GRF-1 (Phospho-Tyr1105) Antibody
Host Species	Rabbit
Clonality	Polyclonal
Purification	Antibodies were produced by immunizing rabbits with synthetic phosphopeptide and KLH conjugates. Antibodies were purified by affinity-chromatography using epitope-specific phosphopeptide. Non-phospho specific antibodies were removed by chromatography using non-phosphopeptide.
Applications	WB
Species Reactivity	Hu Ms Rt
Specificity	The antibody detects endogenous level of GRF-1 only when phosphorylated at Tyrosine 1150.
Immunogen Type	Peptide-KLH
Immunogen Description	Peptide sequence around phosphorylation site of Tyrosine 1105 (N-I-Y(p)-S-V) derived from Human GRF-1.
Target Name	GRF-1
Modification	Phospho
Other Names	GRLF1, P190A, P190-A, p190RhoGAP, p190ARhoGAP
Accession No.	Swiss-Prot#: Q9NRY4; NCBI Gene#: 2909; NCBI Protein#: NP_004482.4
Uniprot	Q9NRY4
GeneID	2909;
SDS-PAGE MW	155kd
Concentration	1.0mg/ml
Formulation	Supplied at 1.0mg/mL in phosphate buffered saline (without Mg ²⁺ and Ca ²⁺), pH 7.4, 150mM NaCl, 0.02% sodium azide and 50% glycerol.
Storage	Store at -20°C/1 year

Application Details

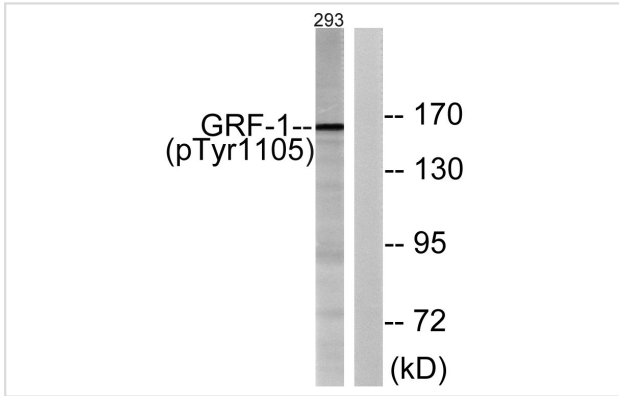
Predicted MW: 155kd

Western blotting: 1:500~1:1000

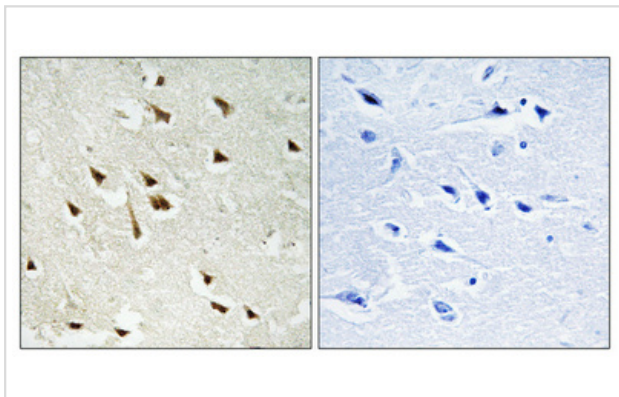
Images



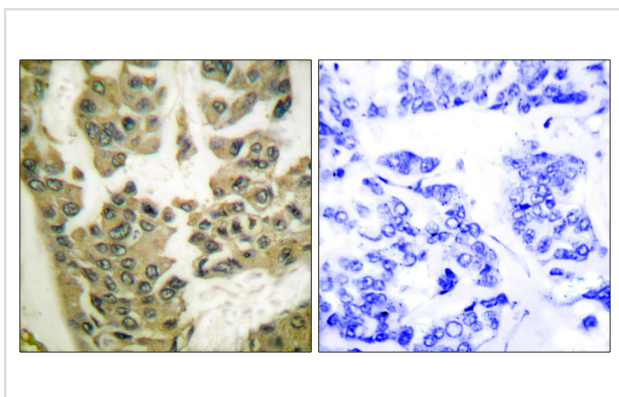
Western Blot analysis of 3T3 cells using Phospho-GRF-1 (Y1105) Polyclonal Antibody



Western blot analysis of lysates from 293 cells treated with EGF 200ng/ml 30', using GRF-1 (Phospho-Tyr1105) Antibody. The lane on the right is blocked with the phospho peptide.



Immunohistochemical analysis of paraffin-embedded Human brain. Antibody was diluted at 1:100(4° overnight). High-pressure and temperature Tris-EDTA,pH8.0 was used for antigen retrieval. Negative control (right) obtained from antibody was pre-absorbed by immunogen peptide.



Immunohistochemistry analysis of paraffin-embedded human breast carcinoma, using GRF-1 (Phospho-Tyr1105) Antibody. The picture on the right is blocked with the phospho peptide.

Background

Represses transcription of the glucocorticoid receptor by binding to the cis-acting regulatory sequence 5'-GAGAAAAGAACTGGAGAACTC-3'. May participate in the regulation of retinal development and degeneration. May transduce signals from p21-ras to the nucleus, acting via the ras GTPase-activating protein (GAP). May also act as a tumor suppressor.

Note: This product is for in vitro research use only