

SOX-9 (Phospho-Ser181) Antibody

Catalog No: #12025

Package Size: #12025-1 50ul #12025-2 100ul

Orders: order@signalwayantibody.comSupport: tech@signalwayantibody.com

Description

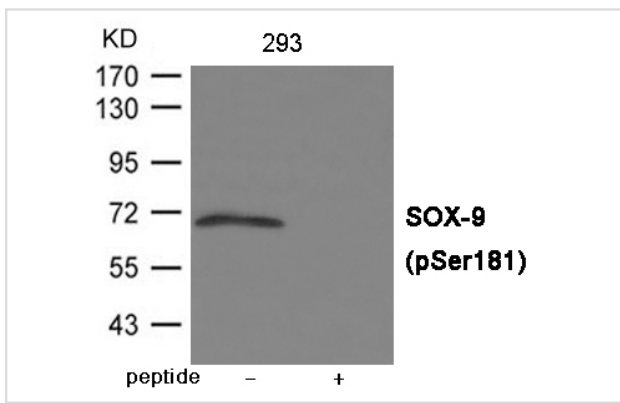
Product Name	SOX-9 (Phospho-Ser181) Antibody
Host Species	Rabbit
Clonality	Polyclonal
Purification	Antibodies were produced by immunizing rabbits with synthetic phosphopeptide and KLH conjugates. Antibodies were purified by affinity-chromatography using epitope-specific phosphopeptide. Non-phospho specific antibodies were removed by chromatography using non-phosphopeptide.
Applications	WB
Species Reactivity	Hu Ms
Specificity	The antibody detects endogenous level of SOX-9 only when phosphorylated at Serine 181.
Immunogen Type	Peptide-KLH
Immunogen Description	Peptide sequence around phosphorylation site of Serine 181 (R-K-S(p)-V-K) derived from Human SOX-9.
Target Name	SOX-9
Modification	Phospho
Other Names	CMD1, CMPD1, SRA1
Accession No.	Swiss-Prot#: P48436; NCBI Gene#: 6662; NCBI Protein#: NP_000337.1
Uniprot	P48436
GeneID	6662;
SDS-PAGE MW	69kd
Concentration	1.0mg/ml
Formulation	Supplied at 1.0mg/mL in phosphate buffered saline (without Mg ²⁺ and Ca ²⁺), pH 7.4, 150mM NaCl, 0.02% sodium azide and 50% glycerol.
Storage	Store at -20°C/1 year

Application Details

Predicted MW: 69kd

Western blotting: 1:500~1:1000

Images



Western blot analysis of extracts from 293 cells using SOX-9 (Phospho-Ser181) Antibody #12025. The lane on the right is treated with the antigen-specific peptide.

Background

Plays an important role in the normal skeletal development. May regulate the expression of other genes involved in chondrogenesis by acting as a transcription factor for these genes.

Note: This product is for in vitro research use only