

ATRIP (Phospho-Ser68) Antibody

Catalog No: #12035

Package Size: #12035-1 50ul #12035-2 100ul

Orders: order@signalwayantibody.comSupport: tech@signalwayantibody.com

Description

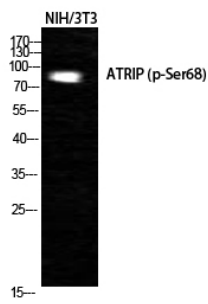
Product Name	ATRIP (Phospho-Ser68) Antibody
Host Species	Rabbit
Clonality	Polyclonal
Purification	Antibodies were produced by immunizing rabbits with synthetic phosphopeptide and KLH conjugates. Antibodies were purified by affinity-chromatography using epitope-specific phosphopeptide. Non-phospho specific antibodies were removed by chromatography using non-phosphopeptide.
Applications	WB
Species Reactivity	Hu Ms Rt
Specificity	The antibody detects endogenous level of ATRIP only when phosphorylated at Serine 68.
Immunogen Type	Peptide-KLH
Immunogen Description	Peptide sequence around phosphorylation site of Serine 68 (L-A-S(p)-Q-A) derived from Human ATRIP.
Target Name	ATRIP
Modification	Phospho
Other Names	TREX1
Accession No.	Swiss-Prot#: Q8WXE1; NCBI Gene#: 84126; NCBI Protein#: NP_001257951.1
Uniprot	Q8WXE1
GeneID	84126;
SDS-PAGE MW	80kd
Concentration	1.0mg/ml
Formulation	Supplied at 1.0mg/mL in phosphate buffered saline (without Mg ²⁺ and Ca ²⁺), pH 7.4, 150mM NaCl, 0.02% sodium azide and 50% glycerol.
Storage	Store at -20°C/1 year

Application Details

Predicted MW: 80kd

Western blotting: 1:500~1:1000

Images



Western Blot analysis of NIH-3T3 cells using Phospho-ATRIP (S68) Polyclonal Antibody cells nucleus extracted by Minute TM Cytoplasmic and Nuclear Fractionation kit (SC-003, Inventbiotech, MN, USA).

Background

Required for checkpoint signaling after DNA damage. Required for ATR expression, possibly by stabilizing the protein.

Note: This product is for in vitro research use only